



ELECTRONIC COPY

LABORATORY GROWN DIAMOND REPORT

November 16, 2025	
IGI Report Number	LG749562934
Description	LABORATORY GROWN DIAMOND
Shape and Cutting Style	ROUND BRILLIANT
Measurements	6.49 - 6.54 X 4.00 MM
GRADING RESULTS	
Carat Weight	1.03 CARAT
Color Grade	D
Clarity Grade	VS 2
Cut Grade	EXCELLENT

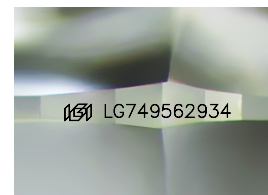
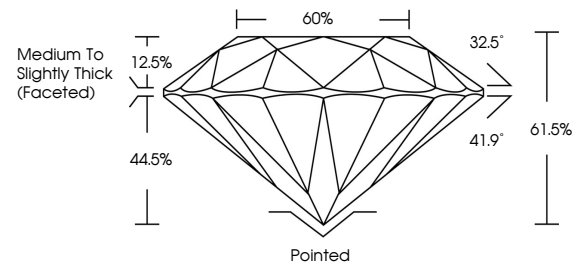
ADDITIONAL GRADING INFORMATION

Polish	EXCELLENT
Symmetry	EXCELLENT
Fluorescence	NONE
Inscription(s)	 LG749562934

Comments: This Laboratory Grown Diamond was created by Chemical Vapor Deposition (CVD) growth process.
Type IIa

LG749562934
Report verification at igi.org

PROPORTIONS



Sample Image Used

COLOR

D E F G H I J Faint Very Light Light

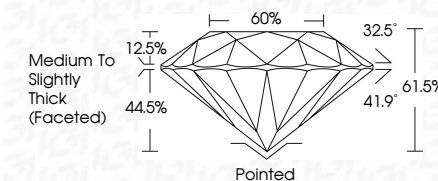
CLARITY

FL	IF	VVS ¹⁻²	VS ¹⁻²	SI ¹⁻²	I ¹⁻³
Flawless	Internally Flawless	Very Very Slightly Included	Very Slightly Included	Slightly Included	Included

LABORATORY GROWN DIAMOND REPORT



November 16, 2025	
IGI Report Number	LG749562934
Description	LABORATORY GROWN DIAMOND
Shape and Cutting Style	ROUND BRILLIANT
Measurements	6.49 - 6.54 X 4.00 MM
GRADING RESULTS	
Carat Weight	1.03 CARAT
Color Grade	D
Clarity Grade	VS 2
Cut Grade	EXCELLENT



ADDITIONAL GRADING INFORMATION

Polish	EXCELLENT
Symmetry	EXCELLENT
Fluorescence	NONE
Inscription(s)	 LG749562934
<p>Comments: This Laboratory Grown Diamond was created by Chemical Vapor Deposition (CVD) growth process.</p> <p>Type IIa</p>	



© IGI 2020, International Gemological Institute

FD - 10 20



THIS DOCUMENT WAS PRODUCED WITH THE FOLLOWING SECURITY MEASURES: SPECIAL DOCUMENT PAPER, INK SCREENS, WATERMARK, BACKGROUND DESIGNS, HOLOGRAM AND OTHER SECURITY FEATURES NOT LISTED AND DO EXCEED DOCUMENT SECURITY INDUSTRY GUIDELINES

www.igi.org

November 16, 2025
IGI Report No LG749562934
ROUND BRILLIANT

6.49 - 6.54 X .002 MM	Carat Weight	1.08 CARAT
	Color Grade	D
	Clarity Grade	VS 2
	Cut Grade	EXCELLENT
	Depth	61.65%
	Table	60%
	Girdle	Medium to Slightly Thick (faceted)
	Culet	Pointed
	Polish	EXCELLENT
	Symmetry	EXCELLENT
	Fluorescence	NONE
		Serial # 1271000094

Comments:
This Laboratory Grown Diamond was created by Chemical Vapor Deposition (CVD) growth process.