



INTERNATIONAL GEMOLOGICAL INSTITUTE

ELECTRONIC COPY

LABORATORY GROWN DIAMOND REPORT

November 21, 2025

IGI Report Number

LG749562800

Description

LABORATORY GROWN DIAMOND

Shape and Cutting Style

PRINCESS CUT

Measurements

3.87 X 3.75 X 2.56 MM

GRADING RESULTS

Carat Weight

0.34 CARAT

Color Grade

FANCY VIVID PINKISH ORANGE

Clarity Grade

VS 1

ADDITIONAL GRADING INFORMATION

Polish

VERY GOOD

Symmetry

VERY GOOD

Fluorescence

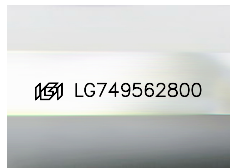
STRONG

Inscription(s)

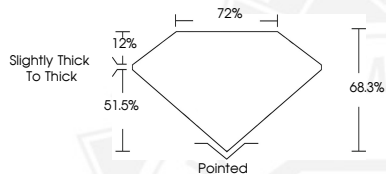
IGI LG749562800

Comments: This Laboratory Grown Diamond was created by Chemical Vapor Deposition (CVD) growth process.

Indications of post-growth treatment.



Sample Image Used



November 21, 2025

IGI Report Number LG749562800

PRINCESS CUT

LABORATORY GROWN DIAMOND

3.87 X 3.75 X 2.56 MM

Carat Weight 0.34 CARAT

Color Grade FANCY VIVID

PINKISH ORANGE

Clarity Grade VS 1

Polish VERY GOOD

Symmetry VERY GOOD

Fluorescence STRONG

Inscription(s) IGI LG749562800

Comments: This Laboratory Grown Diamond was created by Chemical Vapor Deposition (CVD) growth process. Indications of post-growth treatment.



November 21, 2025

IGI Report Number LG749562800

PRINCESS CUT

LABORATORY GROWN DIAMOND

3.87 X 3.75 X 2.56 MM

Carat Weight 0.34 CARAT

Color Grade FANCY VIVID

PINKISH ORANGE

Clarity Grade VS 1

Polish VERY GOOD

Symmetry VERY GOOD

Fluorescence STRONG

Inscription(s) IGI LG749562800

Comments: This Laboratory Grown Diamond was created by Chemical Vapor Deposition (CVD) growth process. Indications of post-growth treatment.



THIS DOCUMENT WAS PRODUCED WITH THE FOLLOWING SECURITY MEASURES: SPECIAL DOCUMENT PAPER, INK SCREENS, WATERMARK, BACKGROUND DESIGNS, HOLOGRAM AND OTHER SECURITY FEATURES NOT LISTED AND DO EXCEED DOCUMENT SECURITY INDUSTRY GUIDELINES.

For terms & conditions and to verify this report, please visit www.igi.org