



November 21, 2025

IGI Report Number **LG749560198**

**HEART BRILLIANT
LABORATORY GROWN DIAMOND
4.33 X 4.80 X 2.60 MM**

Carat Weight	0.31 CARAT
Color Grade	FANCY VIVID BLUE
Clarity Grade	VVS 2
Polish	VERY GOOD
Symmetry	VERY GOOD
Fluorescence	NONE
Inscription(s)	IGI LG749560198

Comments: This Laboratory Grown Diamond was created by Chemical Vapor Deposition (CVD) growth process. Indications of post-growth treatment.

LABORATORY GROWN DIAMOND REPORT

November 21, 2025

IGI Report Number **LG749560198**

Description **LABORATORY GROWN DIAMOND**

Shape and Cutting Style **HEART BRILLIANT**

Measurements **4.33 X 4.80 X 2.60 MM**

GRADING RESULTS

Carat Weight **0.31 CARAT**

Color Grade **FANCY VIVID BLUE**

Clarity Grade **VVS 2**

ADDITIONAL GRADING INFORMATION

Polish **VERY GOOD**

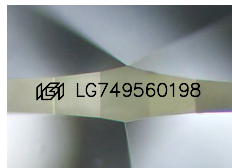
Symmetry **VERY GOOD**

Fluorescence **NONE**

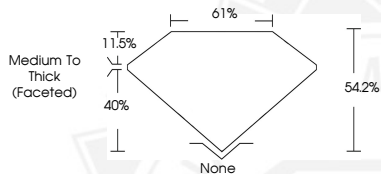
Inscription(s) **IGI LG749560198**

Comments: This Laboratory Grown Diamond was created by Chemical Vapor Deposition (CVD) growth process.

Indications of post-growth treatment.



Sample Image Used



November 21, 2025

IGI Report Number **LG749560198**

**HEART BRILLIANT
LABORATORY GROWN DIAMOND
4.33 X 4.80 X 2.60 MM**

Carat Weight	0.31 CARAT
Color Grade	FANCY VIVID BLUE
Clarity Grade	VVS 2
Polish	VERY GOOD
Symmetry	VERY GOOD
Fluorescence	NONE
Inscription(s)	IGI LG749560198

Comments: This Laboratory Grown Diamond was created by Chemical Vapor Deposition (CVD) growth process. Indications of post-growth treatment.



THIS DOCUMENT WAS PRODUCED WITH THE FOLLOWING SECURITY MEASURES: SPECIAL DOCUMENT PAPER, INK SCREENS, WATERMARK, BACKGROUND DESIGNS, HOLOGRAM AND OTHER SECURITY FEATURES NOT LISTED AND DO EXCEED DOCUMENT SECURITY INDUSTRY GUIDELINES.