



ELECTRONIC COPY

LG749559808
Report verification at igi.org



November 21, 2025
IGI Report Number **LG749559808**
Description **LABORATORY GROWN DIAMOND**
Shape and Cutting Style **SQUARE CUSHION MODIFIED BRILLIANT**
Measurements **12.65 X 12.17 X 7.74 MM**
GRADING RESULTS
Carat Weight **11.10 CARATS**
Color Grade **FANCY VIVID PINK**
Clarity Grade **VVS 2**

November 21, 2025
IGI Report Number **LG749559808**
Description **LABORATORY GROWN DIAMOND**
Shape and Cutting Style **SQUARE CUSHION MODIFIED BRILLIANT**
Measurements **12.65 X 12.17 X 7.74 MM**

GRADING RESULTS

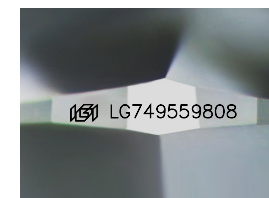
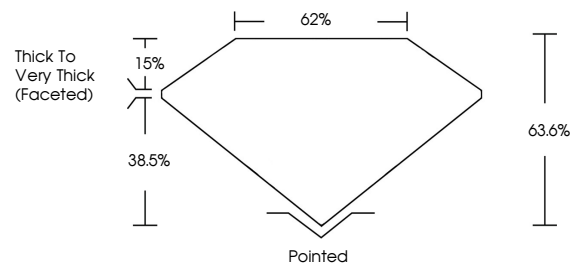
Carat Weight **11.10 CARATS**
Color Grade **FANCY VIVID PINK**
Clarity Grade **VVS 2**

ADDITIONAL GRADING INFORMATION

Polish **EXCELLENT**
Symmetry **EXCELLENT**
Fluorescence **STRONG**
Inscription(s) **IGI LG749559808**

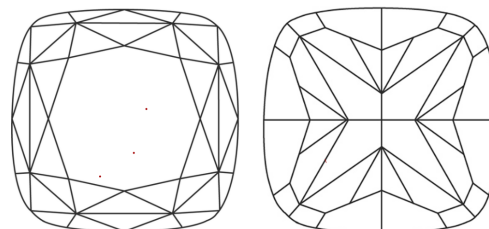
Comments: This Laboratory Grown Diamond was created by Chemical Vapor Deposition (CVD) growth process. Indications of post-growth treatment.

PROPORTIONS



Sample Image Used

CLARITY CHARACTERISTICS



KEY TO SYMBOLS

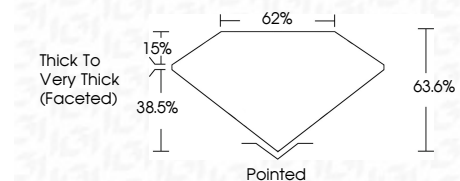
Red symbols indicate internal characteristics.
Green symbols indicate external characteristics.

COLOR

D E F G H I J Faint Very Light Light

CLARITY

FL	IF	VVS ¹⁻²	VS ¹⁻²	SI ¹⁻²	I ¹⁻³
Flawless	Internally Flawless	Very Very Slightly Included	Very Slightly Included	Slightly Included	Included



ADDITIONAL GRADING INFORMATION

Polish **EXCELLENT**
Symmetry **EXCELLENT**
Fluorescence **STRONG**
Inscription(s) **IGI LG749559808**
Comments: This Laboratory Grown Diamond was created by Chemical Vapor Deposition (CVD) growth process. Indications of post-growth treatment.



November 21, 2025
IGI Report No. LG749559808
SQUARE CUSHION MODIFIED BRILLIANT
12.65 X 12.17 X 7.74 MM
Carat Weight **11.10 CARATS**
Color Grade **FANCY VIVID PINK**
Clarity Grade **VVS 2**
Depth **63.6%**
Table **62%**
Girdle
Culet
Polish **EXCELLENT**
Symmetry **EXCELLENT**
Fluorescence **STRONG**
Inscription(s) **IGI LG749559808**
Comments: This Laboratory Grown Diamond was created by Chemical Vapor Deposition (CVD) growth process. Indications of post-growth treatment.