



**ELECTRONIC COPY**

LG749553604  
Report verification at igi.org



November 20, 2025

IGI Report Number **LG749553604**

Description **LABORATORY GROWN DIAMOND**

Shape and Cutting Style **PEAR MODIFIED BRILLIANT**

Measurements **13.08 X 8.27 X 5.16 MM**

**GRADING RESULTS**

Carat Weight **4.02 CARATS**

Color Grade **FANCY INTENSE YELLOW**

Clarity Grade **VS 1**

November 20, 2025

IGI Report Number **LG749553604**

Description **LABORATORY GROWN DIAMOND**

Shape and Cutting Style **PEAR MODIFIED BRILLIANT**

Measurements **13.08 X 8.27 X 5.16 MM**

**GRADING RESULTS**

Carat Weight **4.02 CARATS**

Color Grade **FANCY INTENSE YELLOW**

Clarity Grade **VS 1**

**ADDITIONAL GRADING INFORMATION**

Polish **EXCELLENT**

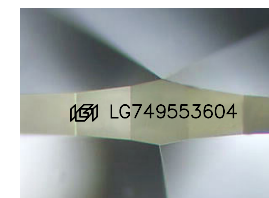
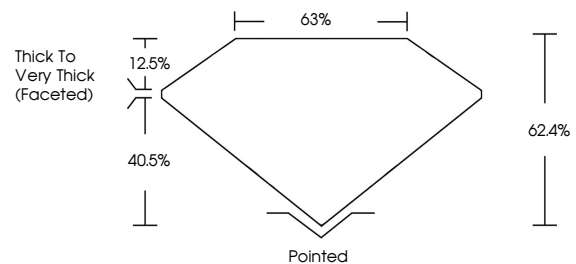
Symmetry **EXCELLENT**

Fluorescence **NONE**

Inscription(s) **IGI LG749553604**

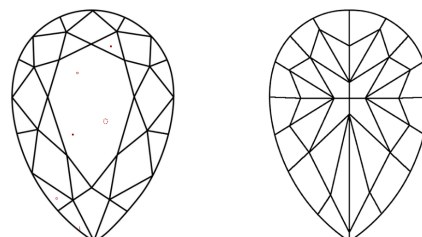
Comments: This Laboratory Grown Diamond was created by Chemical Vapor Deposition (CVD) growth process.

**PROPORTIONS**



Sample Image Used

**CLARITY CHARACTERISTICS**



**KEY TO SYMBOLS**

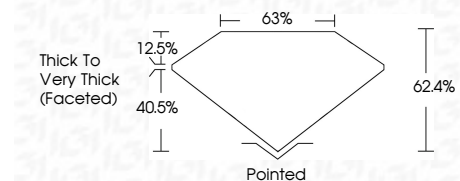
Red symbols indicate internal characteristics.  
Green symbols indicate external characteristics.

**COLOR**

D E F G H I J Faint Very Light Light

**CLARITY**

FL	IF	VS <sup>1-2</sup>	VS <sup>1-2</sup>	SI <sup>1-2</sup>	I <sup>1-3</sup>
Flawless	Internally Flawless	Very Very Slightly Included	Very Slightly Included	Slightly Included	Included



**ADDITIONAL GRADING INFORMATION**

Polish **EXCELLENT**

Symmetry **EXCELLENT**

Fluorescence **NONE**

Inscription(s) **IGI LG749553604**

Comments: This Laboratory Grown Diamond was created by Chemical Vapor Deposition (CVD) growth process.



**IGI**



November 20, 2025  
IGI Report No LG749553604  
**PEAR MODIFIED BRILLIANT**

**4.02 CARATS**  
Carat Weight  
**FANCY INTENSE YELLOW**  
Color Grade

**VS 1**  
Clarity Grade  
**62.4%**  
Depth  
**63%**  
Table  
**Thick to Very Thick (Faceted)**  
Girdle  
**Pointed**  
Culet  
**EXCELLENT**  
Polish  
**EXCELLENT**  
Symmetry  
**NONE**  
Fluorescence  
**IGI LG749553604**  
Inscription(s)

Comments: This Laboratory Grown Diamond was created by Chemical Vapor Deposition (CVD) growth process.