



**ELECTRONIC COPY**

## LABORATORY GROWN DIAMOND REPORT

November 15, 2025	
IGI Report Number	LG749552646
Description	LABORATORY GROWN DIAMOND
Shape and Cutting Style	ROUND BRILLIANT
Measurements	6.91 - 6.94 X 4.37 MM

## GRADING RESULTS

Carat Weight	1.30 CARAT
Color Grade	D
Clarity Grade	VS 1
Cut Grade	EXCELLENT

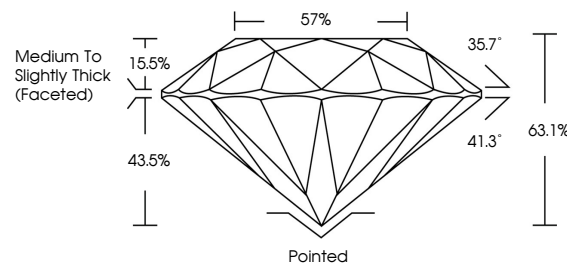
### ADDITIONAL GRADING INFORMATION

Polish	VERY GOOD
Symmetry	EXCELLENT
Fluorescence	NONE
Inscription(s)	15 LG749552646

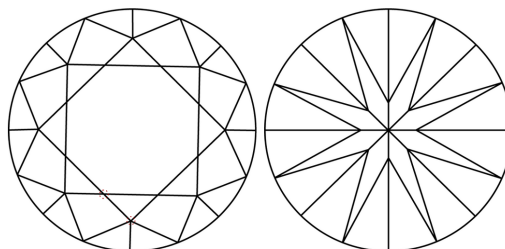
Comments: As Grown - No indication of post-growth treatment.  
This Laboratory Grown Diamond was created by High Pressure High Temperature (HPHT) growth process.  
Type II

LG749552646  
Report verification at [lgi.org](https://lgi.org)

## PROPORTIONS

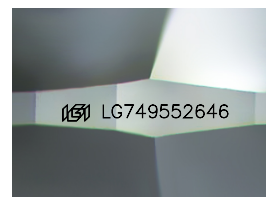


## CLARITY CHARACTERISTICS



## KEY TO SYMBOLS

Red symbols indicate internal characteristics.  
Green symbols indicate external characteristics.



Sample Image Used

## COLOR

D E F G H I J Faint Very Light Light

## CLARITY

FL	IF	VVS <sup>1-2</sup>	VS <sup>1-2</sup>	SI <sup>1-2</sup>	I <sup>1-3</sup>
Flawless	Internally Flawless	Very Very Slightly Included	Very Slightly Included	Slightly Included	Included

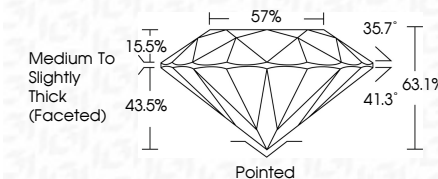
## LABORATORY GROWN DIAMOND REPORT



November 15, 2025	
IGI Report Number	LG74955266
Description	LABORATORY GROWN DIAMOND
Shape and Cutting Style	ROUND BRILLIANT
Measurements	6.91 - 6.94 X 4.37 MM

## GRADING RESULTS

Carat Weight	1.30 CARAT
Color Grade	D
Clarity Grade	VS 1
Cut Grade	EXCELLENT



### ADDITIONAL GRADING INFORMATION

Polish	VERY GOOD
Symmetry	EXCELLENT
Fluorescence	NONE
Inscription(s)	<del>(G)</del> LG749552646
Comments: As Grown - No indication of post-growth treatment.	
This Laboratory Grown Diamond was created by High Pressure High Temperature (HPHT) growth process.	
Type II	



© IGI 2020, International Gemological Institute

FD - 10 20

**www.igi.org**



THIS DOCUMENT WAS PRODUCED WITH THE FOLLOWING SECURITY MEASURES: SPECIAL DOCUMENT PAPER, INK SCREENS, WATERMARK, BACKGROUND DESIGNS, HOLOGRAM AND OTHER SECURITY FEATURES NOT LISTED AND DO EXCEED DOCUMENT SECURITY INDUSTRY GUIDELINES

November 15, 2025  
GJ Report No | G749552646

<b>Report No.</b>	<b>16740952046</b>
<b>Color</b>	<b>BRIGHT BRILLIANT</b>
<b>Weight</b>	<b>1.30 CARAT</b>
<b>Shape</b>	<b>D</b>
<b>Depth</b>	<b>VS 1</b>
<b>Clarity</b>	<b>EXCELLENT</b>
<b>Cut</b>	<b>EXCELLENT</b>
<b>Table</b>	<b>63.1%</b>
<b>Girdle</b>	<b>57%</b>
<b>Fluorescence</b>	<b>Medium to slightly Thick (Faced)</b>
<b>Symmetry</b>	<b>Polished</b>
<b>Polar Plot</b>	<b>VERY GOOD</b>
<b>Comments</b>	<b>EXCELLENT</b>
<b>Notes</b>	<b>NONE</b>
<b>Date</b>	<b>1/27/2018</b>

**Comments:**  
As Grown - No indication of post-growth treatment.