



ELECTRONIC COPY

LG749552550
Report verification at igi.org



November 14, 2025

IGI Report Number **LG749552550**

Description **LABORATORY GROWN DIAMOND**

Shape and Cutting Style **EMERALD CUT**

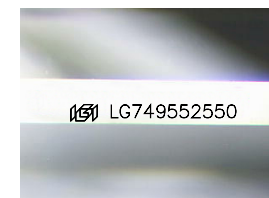
Measurements **10.28 X 6.64 X 4.43 MM**

GRADING RESULTS

Carat Weight **3.05 CARATS**

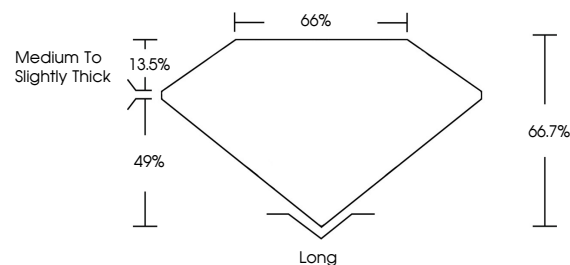
Color Grade **E**

Clarity Grade **VS 1**

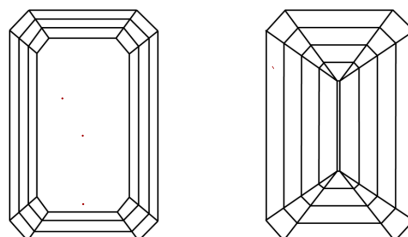


Sample Image Used

PROPORTIONS



CLARITY CHARACTERISTICS



KEY TO SYMBOLS

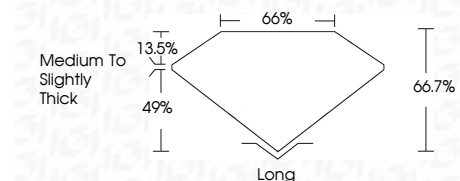
Red symbols indicate internal characteristics.
Green symbols indicate external characteristics.

COLOR

D E F G H I J Faint Very Light Light

CLARITY

FL	IF	VS ¹⁻²	VS ¹⁻²	SI ¹⁻²	I ¹⁻³
Flawless	Internally Flawless	Very Very Slightly Included	Very Slightly Included	Slightly Included	Included



ADDITIONAL GRADING INFORMATION

Polish **EXCELLENT**

Symmetry **EXCELLENT**

Fluorescence **NONE**

Inscription(s) **IGI LG749552550**

Comments: This Laboratory Grown Diamond was created by Chemical Vapor Deposition (CVD) growth process. Type IIa



IGI



November 14, 2025
IGI Report No LG749552550
EMERALD CUT

3.05 CARATS
E

10.28 X 6.64 X 4.43 MM

Carat Weight
Color Grade
Clarity Grade
Depth
Table
Girdle
Medium to Slightly Thick

VS 1
66.7%
49%

Long
EXCELLENT
EXCELLENT
NONE

IGI LG749552550

Comments: This Laboratory Grown Diamond was created by Chemical Vapor Deposition (CVD) growth process. Type IIa