

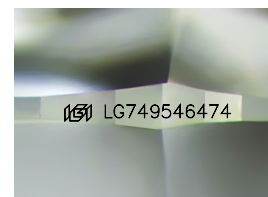
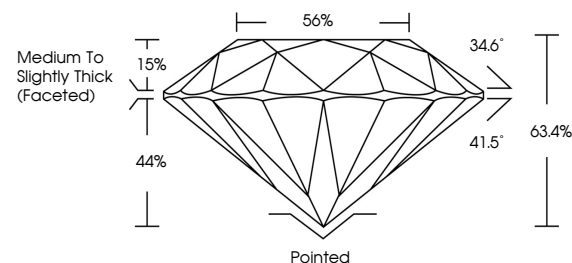


ELECTRONIC COPY

LABORATORY GROWN DIAMOND REPORT

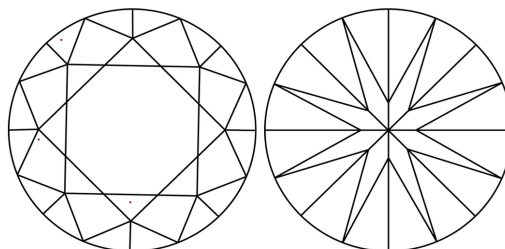
LG749546474
Report verification at igi.org

PROPORTIONS



Sample Image Used

CLARITY CHARACTERISTICS



KEY TO SYMBOLS

Red symbols indicate internal characteristics.
Green symbols indicate external characteristics.

COLOR

D E F G H I J Faint Very Light Light

CLARITY

FL	IF	VVS ¹⁻²	VS ¹⁻²	SI ¹⁻²	I ¹⁻³
Flawless	Internally Flawless	Very Very Slightly Included	Very Slightly Included	Slightly Included	Included

LABORATORY GROWN DIAMOND REPORT



November 17, 2025

IGI Report Number **LG749546474**Description **LABORATORY GROWN DIAMOND**Shape and Cutting Style **ROUND BRILLIANT**

Measurements 9.13 - 9.17 X 5.80 MM

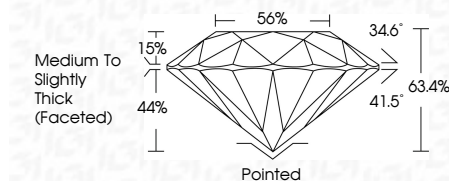
GRADING RESULTS

Carat Weight **3.00 CARATS**

Color Grade

Clarity Grade WS 2

Cut Grade **EXCELLENT**



ADDITIONAL GRADING INFORMATION

Polish EXCELLENT

Symmetry **EXCELLENT**Fluorescence **NONE**Inscription(s) LG749546474

Comments: This Laboratory Grown Diamond was created by Chemical Vapor Deposition (CVD) growth process.
Type IIa



© IGI 2020, International Gemological Institute

FD - 10 20



THIS DOCUMENT WAS PRODUCED WITH THE FOLLOWING SECURITY MEASURES: SPECIAL DOCUMENT PAPER, INK SCREENS, WATERMARK, BACKGROUND DESIGNS, HOLOGRAM AND OTHER SECURITY FEATURES NOT LISTED AND DO EXCEED DOCUMENT SECURITY INDUSTRY GUIDELINES

www.igi.org

November 17, 2025
IGI Report No LG749546474
ROUND BRILLIANT

<p>19.13 - 9.17 x 5.80 MM</p> <p>Carat Weight Color Grade Clarity Grade Cut Grade Depth Table Girdle Culet Polish Symmetry Fluorescence</p>	<p>3.00 CARATS</p> <p>VVS 2</p> <p>EXCELLENT</p> <p>63.4%</p> <p>56%</p> <p>Medium to Slightly Thick (Faceted)</p> <p>Pointed</p> <p>EXCELLENT</p> <p>EXCELLENT</p> <p>NONE</p> <p>gem1270546474</p>
--	---

Comments:
This Laboratory Grown Diamond was
created by Chemical Vapor Deposition
(CVD) growth process.