



**ELECTRONIC COPY**

## LABORATORY GROWN DIAMOND REPORT

|                         |                          |
|-------------------------|--------------------------|
| November 18, 2025       |                          |
| IGI Report Number       | LG749545810              |
| Description             | LABORATORY GROWN DIAMOND |
| Shape and Cutting Style | TRIANGULAR BRILLIANT     |
| Measurements            | 7.07 X 6.97 X 4.16 MM    |

## GRADING RESULTS

|               |                      |
|---------------|----------------------|
| Carat Weight  | 1.09 CARAT           |
| Color Grade   | FANCY INTENSE YELLOW |
| Clarity Grade | VS 2                 |

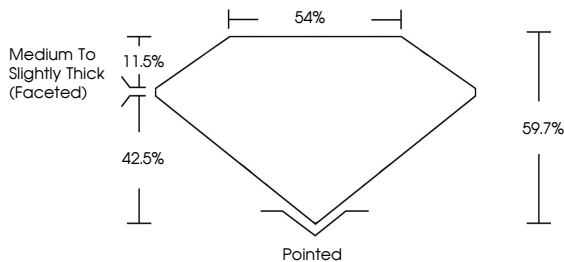
### ADDITIONAL GRADING INFORMATION

|                |                                                                                               |
|----------------|-----------------------------------------------------------------------------------------------|
| Polish         | EXCELLENT                                                                                     |
| Symmetry       | VERY GOOD                                                                                     |
| Fluorescence   | NONE                                                                                          |
| Inscription(s) |  LG749545810 |

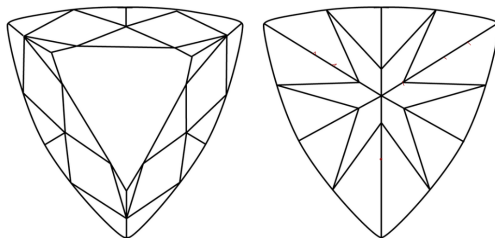
Comments: As Grown - No indication of post-growth treatment.  
This Laboratory Grown Diamond was created by High Pressure High Temperature (HPHT) growth process.

LG749545810  
Report verification at [igi.org](https://igi.org)

## PROPORTIONS

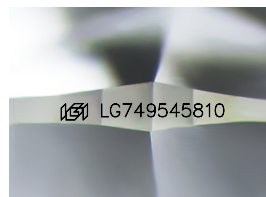


## CLARITY CHARACTERISTICS



## KEY TO SYMBOLS

Red symbols indicate internal characteristics.  
Green symbols indicate external characteristics.



Sample Image Used

**COLOR**

D E F G H I J Faint Very Light Light

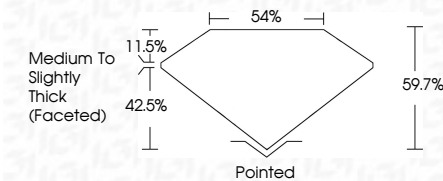
## CLARITY

| FL       | IF                  | VVS <sup>1-2</sup>          | VS <sup>1-2</sup>      | SI <sup>1-2</sup> | I <sup>1-3</sup> |
|----------|---------------------|-----------------------------|------------------------|-------------------|------------------|
| Flawless | Internally Flawless | Very Very Slightly Included | Very Slightly Included | Slightly Included | Included         |


## LABORATORY GROWN DIAMOND REPORT



|                         |                          |
|-------------------------|--------------------------|
| November 18, 2025       |                          |
| IGI Report Number       | LG749545810              |
| Description             | LABORATORY GROWN DIAMOND |
| Shape and Cutting Style | TRIANGULAR BRILLIANT     |
| Measurements            | 7.07 X 6.97 X 4.16 MM    |
| GRADING RESULTS         |                          |
| Carat Weight            | 1.09 CARAT               |
| Color Grade             | FANCY INTENSE YELLOW     |
| Clarity Grade           | VS 2                     |



### ADDITIONAL GRADING INFORMATION

|                                                                                                    |                                                                                                  |
|----------------------------------------------------------------------------------------------------|--------------------------------------------------------------------------------------------------|
| Polish                                                                                             | EXCELLENT                                                                                        |
| Symmetry                                                                                           | VERY GOOD                                                                                        |
| Fluorescence                                                                                       | NONE                                                                                             |
| Inscription(s)                                                                                     |  LG749545810 |
| Comments: As Grown - No indication of post-growth treatment.                                       |                                                                                                  |
| This Laboratory Grown Diamond was created by High Pressure High Temperature (HPHT) growth process. |                                                                                                  |



**www.igi.org**

© IGI 2020, International Gemological Institute

FD - 10 20



THIS DOCUMENT WAS PRODUCED WITH THE FOLLOWING SECURITY MEASURES: SPECIAL DOCUMENT PAPER, INK SCREENS, WATERMARK, BACKGROUND DESIGNS, HOLOGRAM AND OTHER SECURITY FEATURES NOT LISTED AND DO EXCEED DOCUMENT SECURITY INDUSTRY GUIDELINE

|                            |                                                                                                     |  |
|----------------------------|-----------------------------------------------------------------------------------------------------|--|
| November 18, 2025          | 1.09 CARAT                                                                                          |  |
| IGI Report No. LG749654810 | FANCY INTENSE YELLOW                                                                                |  |
| TRANSPIRANT BRILLIANT      |                                                                                                     |  |
| 1.07 X 6.97 X 4.16 MM      |                                                                                                     |  |
| Color Weight               |                                                                                                     |  |
| Color Grade                | VS 2                                                                                                |  |
| Clarity Grade              | 59.7%                                                                                               |  |
| Depth                      | 54%                                                                                                 |  |
| Table                      | Medium to Slightly Thick (faceted)                                                                  |  |
| Girdle                     | Pinned                                                                                              |  |
| Quiet                      | EXCELLENT                                                                                           |  |
| Polish                     | VERY GOOD                                                                                           |  |
| Symmetry                   | NONE                                                                                                |  |
| Fluorescence               | 160 LG749654810                                                                                     |  |
| Inscriptions(s)            |                                                                                                     |  |
| Comments:                  | As Grown - No indication of post-growth treatment.                                                  |  |
|                            | This Laboratory Growth Diamond was created by High Pressure High Temperature (HPHT) growth process. |  |