



ELECTRONIC COPY

LABORATORY GROWN DIAMOND REPORT

November 13, 2025	
IGI Report Number	LG749545770
Description	LABORATORY GROWN DIAMOND
Shape and Cutting Style	CUT CORNERED RECTANGULAR MODIFIED BRILLIANT
Measurements	9.46 X 6.79 X 4.62 MM

GRADING RESULTS

Carat Weight	2.52 CARATS
Color Grade	E
Clarity Grade	VS 1

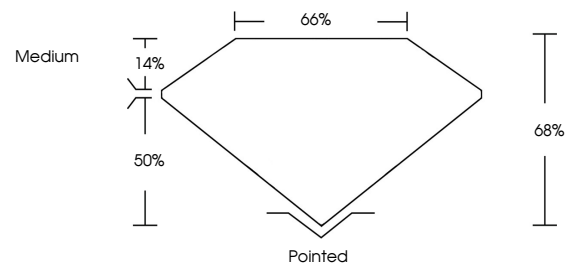
ADDITIONAL GRADING INFORMATION

Polish	EXCELLENT
Symmetry	EXCELLENT
Fluorescence	NONE
Inscription(s)	 LG749545770

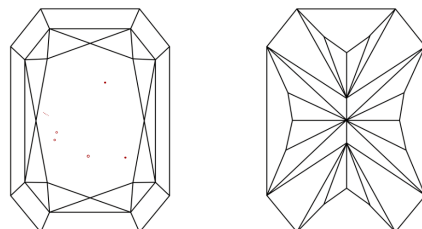
Comments: This Laboratory Grown Diamond was created by Chemical Vapor Deposition (CVD) growth process.
Type IIa

LG749545770
Report verification at igi.org

PROPORTIONS

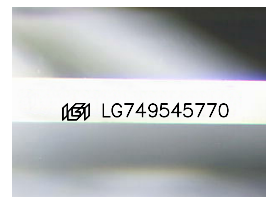


CLARITY CHARACTERISTICS



KEY TO SYMBOLS

Red symbols indicate internal characteristics.
Green symbols indicate external characteristics.



Sample Image Used

COLOR

D E F G H I J Faint Very Light Light

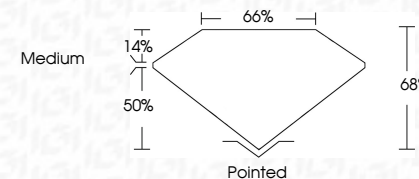
CLARITY

FL	IF	VVS ¹⁻²	VS ¹⁻²	SI ¹⁻²	I ¹⁻³
Flawless	Internally Flawless	Very Very Slightly Included	Very Slightly Included	Slightly Included	Included

LABORATORY GROWN DIAMOND REPORT



November 13, 2025	
IGI Report Number	LG749545770
Description	LABORATORY GROWN DIAMOND
Shape and Cutting Style	CUT CORNERED RECTANGULAR MODIFIED BRILLIANT
Measurements	9.46 X 6.79 X 4.62 MM
GRADING RESULTS	
Carat Weight	2.52 CARATS
Color Grade	E
Clarity Grade	VS 1



ADDITIONAL GRADING INFORMATION

Polish	EXCELLENT
Symmetry	EXCELLENT
Fluorescence	NONE
Inscription(s)	(G) LG749545770
Comments: This Laboratory Grown Diamond was created by Chemical Vapor Deposition (CVD) growth process.	
Type IIa	



© IGI 2020, International Gemological Institute

FD - 10 20

www.igi.org

THIS DOCUMENT WAS PRODUCED WITH THE FOLLOWING SECURITY MEASURES: SPECIAL DOCUMENT PAPER, INK SCREENS, WATERMARK, BACKGROUND DESIGNS, HOLOGRAM AND OTHER SECURITY FEATURES NOT LISTED AND DO EXCEED DOCUMENT SECURITY INDUSTRY GUIDELINE

November 13, 2025	
GI Report No LG76956770	
CUJ CORNERED RECT. MODIFIED BRILLIANT	
4.6 x 4.79 x 4.42 MM	
Color Weight	2.52 CARATS
Color Grade	E
Clarity Grade	Vs 1
Depth	68%
Table	66%
Girdle	Medium
Culet	Poished
Flesh	EXCELLENT
Symmetry	EXCELLENT
Fluorescence	NONE
Inscriptions(s)	#89 LG76956770

Comments:
 This is a Fancy Grown Diamond was
 created by Chemical Vapor Deposition
 CVD growth process.
 Type IIa