



**INTERNATIONAL  
GEMOLOGICAL  
INSTITUTE**

**ELECTRONIC COPY**



December 24, 2025

IGI Report Number **LG749545139**

**ROUND BRILLIANT**

**LABORATORY GROWN DIAMOND**

**4.42 - 4.48 X 2.77 MM**

Carat Weight	<b>0.34 CARAT</b>
Color Grade	<b>FANCY VIVID BLUE</b>
Clarity Grade	<b>SI 1</b>
Cut Grade	<b>VERY GOOD</b>
Polish	<b>VERY GOOD</b>
Symmetry	<b>VERY GOOD</b>
Fluorescence	<b>NONE</b>
Inscription(s)	<b>IGI LG749545139</b>

Comments: This Laboratory Grown Diamond was created by Chemical Vapor Deposition (CVD) growth process. Indications of post-growth treatment.

**LABORATORY GROWN DIAMOND REPORT**

December 24, 2025

IGI Report Number

**LG749545139**

Description

**LABORATORY GROWN DIAMOND**

Shape and Cutting Style

**ROUND BRILLIANT**

Measurements

**4.42 - 4.48 X 2.77 MM**

**GRADING RESULTS**

Carat Weight

**0.34 CARAT**

Color Grade

**FANCY VIVID BLUE**

Clarity Grade

**SI 1**

Cut Grade

**VERY GOOD**

**ADDITIONAL GRADING INFORMATION**

Polish

**VERY GOOD**

Symmetry

**VERY GOOD**

Fluorescence

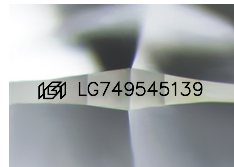
**NONE**

Inscription(s)

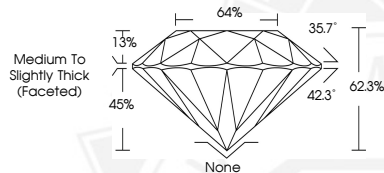
**IGI LG749545139**

Comments: This Laboratory Grown Diamond was created by Chemical Vapor Deposition (CVD) growth process.

Indications of post-growth treatment.



Sample Image Used



December 24, 2025

IGI Report Number **LG749545139**

**ROUND BRILLIANT**

**LABORATORY GROWN DIAMOND**

**4.42 - 4.48 X 2.77 MM**

Carat Weight	<b>0.34 CARAT</b>
Color Grade	<b>FANCY VIVID BLUE</b>
Clarity Grade	<b>SI 1</b>
Cut Grade	<b>VERY GOOD</b>
Polish	<b>VERY GOOD</b>
Symmetry	<b>VERY GOOD</b>
Fluorescence	<b>NONE</b>
Inscription(s)	<b>IGI LG749545139</b>

Comments: This Laboratory Grown Diamond was created by Chemical Vapor Deposition (CVD) growth process. Indications of post-growth treatment.



THIS DOCUMENT WAS PRODUCED WITH THE FOLLOWING SECURITY MEASURES: SPECIAL DOCUMENT PAPER, INK SCREENS, WATERMARK, BACKGROUND DESIGNS, HOLOGRAM AND OTHER SECURITY FEATURES NOT LISTED AND DO EXCEED DOCUMENT SECURITY INDUSTRY GUIDELINES.

For terms & conditions and to verify this report, please visit [www.igi.org](http://www.igi.org)