



December 22, 2025

IGI Report Number **LG749544996**

**PEAR ROSE CUT**

**LABORATORY GROWN DIAMOND**

**8.52 X 8.29 X 1.51 MM**

Carat Weight **0.99 CARAT**

Color Grade **FANCY VIVID BLUE**

Clarity Grade **VS 2**

Polish **EXCELLENT**

Symmetry **EXCELLENT**

Fluorescence **NONE**

Inscription(s) **IGI LG749544996**

Comments: This Laboratory Grown Diamond was created by Chemical Vapor Deposition (CVD) growth process. Indications of post-growth treatment.

**LABORATORY GROWN DIAMOND REPORT**

December 22, 2025

IGI Report Number

**LG749544996**

Description

**LABORATORY GROWN DIAMOND**

Shape and Cutting Style

**PEAR ROSE CUT**

Measurements

**8.52 X 8.29 X 1.51 MM**

**GRADING RESULTS**

Carat Weight

**0.99 CARAT**

Color Grade

**FANCY VIVID BLUE**

Clarity Grade

**VS 2**

**ADDITIONAL GRADING INFORMATION**

Polish

**EXCELLENT**

Symmetry

**EXCELLENT**

Fluorescence

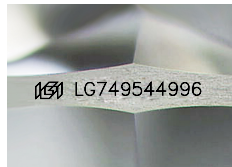
**NONE**

Inscription(s)

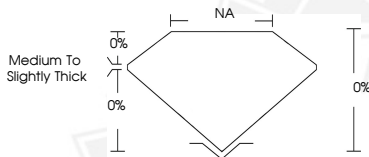
**IGI LG749544996**

Comments: This Laboratory Grown Diamond was created by Chemical Vapor Deposition (CVD) growth process.

Indications of post-growth treatment.



Sample Image Used



December 22, 2025

IGI Report Number **LG749544996**

**PEAR ROSE CUT**

**LABORATORY GROWN DIAMOND**

**8.52 X 8.29 X 1.51 MM**

Carat Weight **0.99 CARAT**

Color Grade **FANCY VIVID BLUE**

Clarity Grade **VS 2**

Polish **EXCELLENT**

Symmetry **EXCELLENT**

Fluorescence **NONE**

Inscription(s) **IGI LG749544996**

Comments: This Laboratory Grown Diamond was created by Chemical Vapor Deposition (CVD) growth process. Indications of post-growth treatment.



THIS DOCUMENT WAS PRODUCED WITH THE FOLLOWING SECURITY MEASURES: SPECIAL DOCUMENT PAPER, INK SCREENS, WATERMARK, BACKGROUND DESIGNS, HOLOGRAM AND OTHER SECURITY FEATURES NOT LISTED AND DO EXCEED DOCUMENT SECURITY INDUSTRY GUIDELINES.