



December 19, 2025
IGI Report Number LG749544726
ROUND BRILLIANT
LABORATORY GROWN DIAMOND
5.67 - 5.70 X 3.49 MM
Carat Weight **0.69 CARAT**
Color Grade **D**
Clarity Grade **VVS 1**
Cut Grade **IDEAL**
Polish **EXCELLENT**
Symmetry **EXCELLENT**
Fluorescence **NONE**
Inscription(s) **IGI LG749544726**

LABORATORY GROWN DIAMOND REPORT

December 19, 2025
IGI Report Number **LG749544726**
Description **LABORATORY GROWN DIAMOND**
Shape and Cutting Style **ROUND BRILLIANT**
Measurements **5.67 - 5.70 X 3.49 MM**

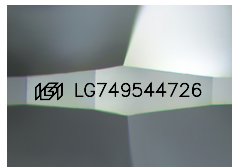
GRADING RESULTS

Carat Weight **0.69 CARAT**
Color Grade **D**
Clarity Grade **VVS 1**
Cut Grade **IDEAL**

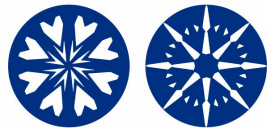
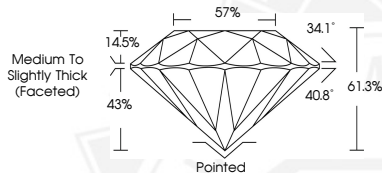
ADDITIONAL GRADING INFORMATION

Polish **EXCELLENT**
Symmetry **EXCELLENT**
Fluorescence **NONE**
Inscription(s) **IGI LG749544726**

Comments: **HEARTS & ARROWS**
As Grown - No indication of post-growth treatment.
This Laboratory Grown Diamond was created by High Pressure High Temperature (HPHT) growth process.
Type II



Sample Image Used



HEARTS & ARROWS



December 19, 2025
IGI Report Number LG749544726
ROUND BRILLIANT
LABORATORY GROWN DIAMOND
5.67 - 5.70 X 3.49 MM
Carat Weight **0.69 CARAT**
Color Grade **D**
Clarity Grade **VVS 1**
Cut Grade **IDEAL**
Polish **EXCELLENT**
Symmetry **EXCELLENT**
Fluorescence **NONE**
Inscription(s) **IGI LG749544726**

Comments: **HEARTS & ARROWS** As Grown - No indication of post-growth treatment. This Laboratory Grown Diamond was created by High Pressure High Temperature (HPHT) growth process. Type II

THIS DOCUMENT WAS PRODUCED WITH THE FOLLOWING SECURITY MEASURES: SPECIAL DOCUMENT PAPER, INK SCREENS, WATERMARK, BACKGROUND DESIGNS, HOLOGRAM AND OTHER SECURITY FEATURES NOT LISTED AND DO EXCEED DOCUMENT SECURITY INDUSTRY GUIDELINES.