



# INTERNATIONAL GEMOLOGICAL INSTITUTE

ELECTRONIC COPY

## LABORATORY GROWN DIAMOND REPORT

December 10, 2025

IGI Report Number

LG749544151

Description

LABORATORY GROWN DIAMOND

Shape and Cutting Style

EMERALD CUT

Measurements

6.79 X 4.38 X 2.50 MM

### GRADING RESULTS

Carat Weight

0.74 CARAT

Color Grade

FANCY INTENSE PINK

Clarity Grade

VS 1

### ADDITIONAL GRADING INFORMATION

Polish

VERY GOOD

Symmetry

VERY GOOD

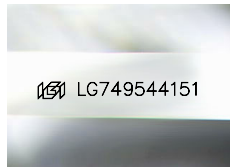
Fluorescence

SLIGHT

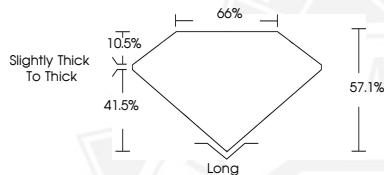
Inscription(s)

IGI LG749544151

Comments: This Laboratory Grown Diamond was created by Chemical Vapor Deposition (CVD) growth process. Indications of post-growth treatment.



Sample Image Used



December 10, 2025

IGI Report Number LG749544151

EMERALD CUT

LABORATORY GROWN DIAMOND

6.79 X 4.38 X 2.50 MM

Carat Weight 0.74 CARAT

Color Grade FANCY INTENSE PINK

Clarity Grade VS 1

Polish VERY GOOD

Symmetry VERY GOOD

Fluorescence SLIGHT

Inscription(s) IGI LG749544151

Comments: This Laboratory Grown Diamond was created by Chemical Vapor Deposition (CVD) growth process. Indications of post-growth treatment.



December 10, 2025

IGI Report Number LG749544151

EMERALD CUT

LABORATORY GROWN DIAMOND

6.79 X 4.38 X 2.50 MM

Carat Weight 0.74 CARAT

Color Grade FANCY INTENSE PINK

Clarity Grade VS 1

Polish VERY GOOD

Symmetry VERY GOOD

Fluorescence SLIGHT

Inscription(s) IGI LG749544151

Comments: This Laboratory Grown Diamond was created by Chemical Vapor Deposition (CVD) growth process. Indications of post-growth treatment.



THIS DOCUMENT WAS PRODUCED WITH THE FOLLOWING SECURITY MEASURES: SPECIAL DOCUMENT PAPER, INK SCREENS, WATERMARK, BACKGROUND DESIGNS, HOLOGRAM AND OTHER SECURITY FEATURES NOT LISTED AND DO EXCEED DOCUMENT SECURITY INDUSTRY GUIDELINES.

For terms & conditions and to verify this report, please visit [www.igi.org](http://www.igi.org)