



December 3, 2025

IGI Report Number **LG749543327**

**OVAL BRILLIANT
LABORATORY GROWN DIAMOND
6.74 X 4.74 X 2.98 MM**

Carat Weight	0.57 CARAT
Color Grade	E
Clarity Grade	VS 1
Polish	VERY GOOD
Symmetry	VERY GOOD
Fluorescence	NONE
Inscription(s)	IGI LG749543327

Comments: This Laboratory Grown Diamond was created by Chemical Vapor Deposition (CVD) growth process. Type IIa

LABORATORY GROWN DIAMOND REPORT

December 3, 2025	
IGI Report Number	LG749543327
Description	LABORATORY GROWN DIAMOND
Shape and Cutting Style	OVAL BRILLIANT
Measurements	6.74 X 4.74 X 2.98 MM

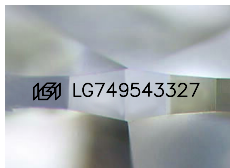
GRADING RESULTS

Carat Weight	0.57 CARAT
Color Grade	E
Clarity Grade	VS 1

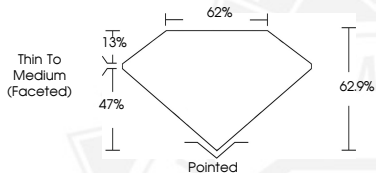
ADDITIONAL GRADING INFORMATION

Polish	VERY GOOD
Symmetry	VERY GOOD
Fluorescence	NONE
Inscription(s)	IGI LG749543327

Comments: This Laboratory Grown Diamond was created by Chemical Vapor Deposition (CVD) growth process. Type IIa



Sample Image Used



December 3, 2025

IGI Report Number **LG749543327**

**OVAL BRILLIANT
LABORATORY GROWN DIAMOND
6.74 X 4.74 X 2.98 MM**

Carat Weight	0.57 CARAT
Color Grade	E
Clarity Grade	VS 1
Polish	VERY GOOD
Symmetry	VERY GOOD
Fluorescence	NONE
Inscription(s)	IGI LG749543327

Comments: This Laboratory Grown Diamond was created by Chemical Vapor Deposition (CVD) growth process. Type IIa



THIS DOCUMENT WAS PRODUCED WITH THE FOLLOWING SECURITY MEASURES: SPECIAL DOCUMENT PAPER, INK SCREENS, WATERMARK, BACKGROUND DESIGNS, HOLOGRAM AND OTHER SECURITY FEATURES NOT LISTED AND DO EXCEED DOCUMENT SECURITY INDUSTRY GUIDELINES.