



November 27, 2025

IGI Report Number **LG749542666**

TAPERED BAGUETTE

LABORATORY GROWN DIAMOND

9.31 X 4.85 X 2.81 MM

Carat Weight **0.97 CARAT**

Color Grade **F**

Clarity Grade **VS 2**

Polish **VERY GOOD**

Symmetry **EXCELLENT**

Fluorescence **NONE**

Inscription(s) **IGI LG749542666**

Comments: This Laboratory Grown Diamond was created by Chemical Vapor Deposition (CVD) growth process. Type IIa

LABORATORY GROWN DIAMOND REPORT

November 27, 2025

IGI Report Number **LG749542666**

Description **LABORATORY GROWN DIAMOND**

Shape and Cutting Style **TAPERED BAGUETTE**

Measurements **9.31 X 4.85 X 2.81 MM**

GRADING RESULTS

Carat Weight **0.97 CARAT**

Color Grade **F**

Clarity Grade **VS 2**

ADDITIONAL GRADING INFORMATION

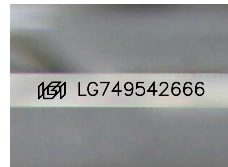
Polish **VERY GOOD**

Symmetry **EXCELLENT**

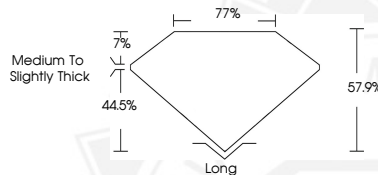
Fluorescence **NONE**

Inscription(s) **IGI LG749542666**

Comments: This Laboratory Grown Diamond was created by Chemical Vapor Deposition (CVD) growth process. Type IIa



Sample Image Used



November 27, 2025

IGI Report Number **LG749542666**

TAPERED BAGUETTE

LABORATORY GROWN DIAMOND

9.31 X 4.85 X 2.81 MM

Carat Weight **0.97 CARAT**

Color Grade **F**

Clarity Grade **VS 2**

Polish **VERY GOOD**

Symmetry **EXCELLENT**

Fluorescence **NONE**

Inscription(s) **IGI LG749542666**

Comments: This Laboratory Grown Diamond was created by Chemical Vapor Deposition (CVD) growth process. Type IIa



THIS DOCUMENT WAS PRODUCED WITH THE FOLLOWING SECURITY MEASURES: SPECIAL DOCUMENT PAPER, INK SCREENS, WATERMARK, BACKGROUND DESIGNS, HOLOGRAM AND OTHER SECURITY FEATURES NOT LISTED AND DO EXCEED DOCUMENT SECURITY INDUSTRY GUIDELINES.