



# INTERNATIONAL GEMOLOGICAL INSTITUTE

## LABORATORY GROWN DIAMOND REPORT

November 18, 2025

IGI Report Number

LG749540956

Description

LABORATORY GROWN DIAMOND

Shape and Cutting Style

PEAR BRILLIANT

Measurements

7.16 X 4.51 X 2.87 MM

### GRADING RESULTS

Carat Weight

0.54 CARAT

Color Grade

F

Clarity Grade

VS 1

### ADDITIONAL GRADING INFORMATION

Polish

GOOD

Symmetry

VERY GOOD

Fluorescence

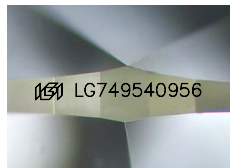
NONE

Inscription(s)

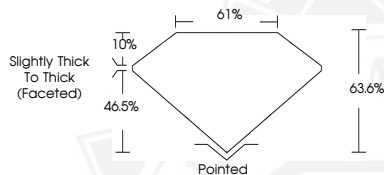
IGI LG749540956

Comments: This Laboratory Grown Diamond was created by Chemical Vapor Deposition (CVD) growth process. Type IIa

ELECTRONIC COPY



Sample Image Used



November 18, 2025

IGI Report Number LG749540956

PEAR BRILLIANT

LABORATORY GROWN DIAMOND

7.16 X 4.51 X 2.87 MM

Carat Weight 0.54 CARAT

Color Grade F

Clarity Grade VS 1

Polish GOOD

Symmetry VERY GOOD

Fluorescence NONE

Inscription(s) IGI LG749540956

Comments: This Laboratory Grown Diamond was created by Chemical Vapor Deposition (CVD) growth process. Type IIa



November 18, 2025

IGI Report Number LG749540956

PEAR BRILLIANT

LABORATORY GROWN DIAMOND

7.16 X 4.51 X 2.87 MM

Carat Weight 0.54 CARAT

Color Grade F

Clarity Grade VS 1

Polish GOOD

Symmetry VERY GOOD

Fluorescence NONE

Inscription(s) IGI LG749540956

Comments: This Laboratory Grown Diamond was created by Chemical Vapor Deposition (CVD) growth process. Type IIa



THIS DOCUMENT WAS PRODUCED WITH THE FOLLOWING SECURITY MEASURES: SPECIAL DOCUMENT PAPER, INK SCREENS, WATERMARK, BACKGROUND DESIGNS, HOLOGRAM AND OTHER SECURITY FEATURES NOT LISTED AND DO EXCEED DOCUMENT SECURITY INDUSTRY GUIDELINES.

For terms & conditions and to verify this report, please visit [www.igi.org](http://www.igi.org)