



**ELECTRONIC COPY**

## LABORATORY GROWN DIAMOND REPORT

LG749540566  
Report verification at [igi.org](https://igi.org)

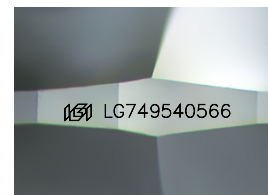
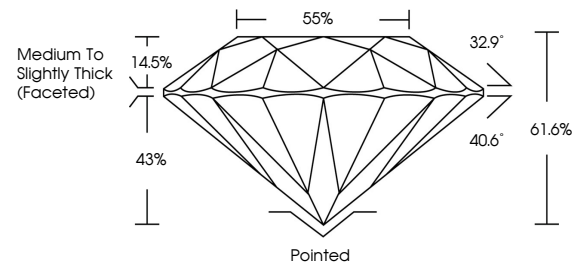
November 21, 2025	
IGI Report Number	LG749540566
Description	LABORATORY GROWN DIAMOND
Shape and Cutting Style	ROUND BRILLIANT
Measurements	8.68 - 8.74 X 5.37 MM
GRADING RESULTS	
Carat Weight	2.51 CARATS
Color Grade	E
Clarity Grade	VVS 1
Cut Grade	EXCELLENT

### ADDITIONAL GRADING INFORMATION

Polish	EXCELLENT
Symmetry	EXCELLENT
Fluorescence	NONE
Inscription(s)	151 LG749540566

Comments: As Grown - No indication of post-growth treatment.  
This Laboratory Grown Diamond was created by High Pressure High Temperature (HPHT) growth process.  
Type II

## PROPORTIONS



Sample Image Used

## COLOR

D E F G H I J Faint Very Light Light

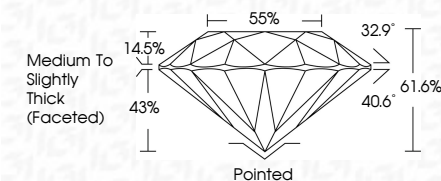
## CLARITY

FL	IF	VVS <sup>1-2</sup>	VS <sup>1-2</sup>	SI <sup>1-2</sup>	I <sup>1-3</sup>
Flawless	Internally Flawless	Very Very Slightly Included	Very Slightly Included	Slightly Included	Included

## LABORATORY GROWN DIAMOND REPORT



November 21, 2025	
IGI Report Number	LG749540566
Description	LABORATORY GROWN DIAMOND
Shape and Cutting Style	ROUND BRILLIANT
Measurements	8.68 - 8.74 X 5.37 MM
GRADING RESULTS	
Carat Weight	2.51 CARATS
Color Grade	E
Clarity Grade	VVS 1
Cut Grade	EXCELLENT



### ADDITIONAL GRADING INFORMATION

Polish	EXCELLENT
Symmetry	EXCELLENT
Fluorescence	NONE
Inscription(s)	<del>(G)</del> LG749540566
Comments: As Grown - No indication of post-growth treatment.	
This Laboratory Grown Diamond was created by High Pressure High Temperature (HPHT) growth process.	
Type II	



© IGI 2020, International Gemological Institute

FD - 10 20



THIS DOCUMENT WAS PRODUCED WITH THE FOLLOWING SECURITY MEASURES: SPECIAL DOCUMENT PAPER, INK SCREENS, WATERMARK, BACKGROUND DESIGNS, HOLOGRAM AND OTHER SECURITY FEATURES NOT LISTED AND DO EXCEED DOCUMENT SECURITY INDUSTRY GUIDELINES

**www.igi.org**

November 21, 2025  
IGI Report No LG749540566  
ROUND BRILLIANT

8.68 - 8.74 X 5.37 MM

8.68 - 8.74 X 5.37 MM  
Carat Weight  
251 CARATS

Color Grade	E
-------------	---

Clarity Grade	WS 1
---------------	------

Cut Grade	EXCELLENT
Depth	61.6%

Depth	61.6%
Table	55%

Girdle

Cullet	Thick (Faceted)	Polinted
--------	-----------------	----------

Culet	Pointed
Polish	EXCELLENT

Symmetry	EXCELLENT
Eligibility	NONE

Fluorescence	NONE
Inscription(s)	191 LG749540566

151 LE/45040000

**Comments:**  
As Grown - No Indication of post-growth

**treatment.**  
This Laboratory Grown Diamond was  
created by L'Oréal, Paris, France. L'Oréal

created by High Pressure High Temperature (HPHT) growth process.

Type II