

ELECTRONIC COPY

LABORATORY GROWN DIAMOND REPORT

November 20, 2025	
IGI Report Number	LG749533646
Description	LABORATORY GROWN DIAMOND
Shape and Cutting Style	ROUND BRILLIANT
Measurements	8.41 - 8.47 X 5.24 MM
GRADING RESULTS	
Carat Weight	2.27 CARATS
Color Grade	D
Clarity Grade	VVS 2
Cut Grade	IDEAL

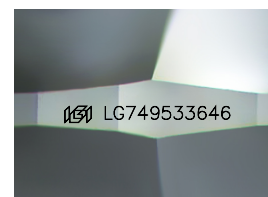
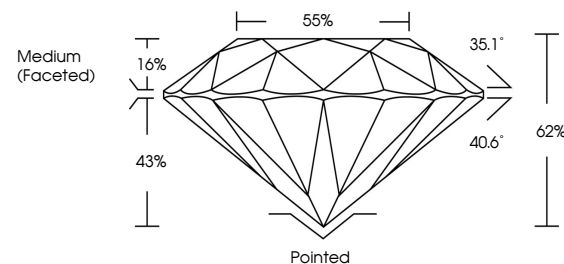
ADDITIONAL GRADING INFORMATION

Polish	EXCELLENT
Symmetry	EXCELLENT
Fluorescence	NONE
Inscription(s)	15 LG749533646

Comments: As Grown - No indication of post-growth treatment.
This Laboratory Grown Diamond was created by High Pressure High Temperature (HPHT) growth process.
Type II

LG749533646
Report verification at igi.org

PROPORTIONS



Sample Image Used

COLOR

D E F G H I J Faint Very Light Light

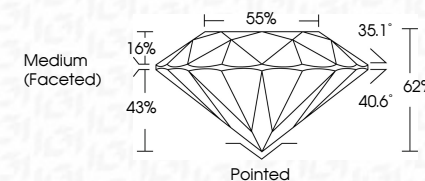
CLARITY

FL	IF	VVS ¹⁻²	VS ¹⁻²	SI ¹⁻²	I ¹⁻³
Flawless	Internally Flawless	Very Very Slightly Included	Very Slightly Included	Slightly Included	Included

LABORATORY GROWN DIAMOND REPORT



November 20, 2025	
IGI Report Number	LG749533646
Description	LABORATORY GROWN DIAMOND
Shape and Cutting Style	ROUND BRILLIANT
Measurements	8.41 - 8.47 X 5.24 MM
GRADING RESULTS	
Carat Weight	2.27 CARATS
Color Grade	D
Clarity Grade	VVS 2
Cut Grade	IDEAL



ADDITIONAL GRADING INFORMATION

Polish	EXCELLENT
Symmetry	EXCELLENT
Fluorescence	NONE
Inscription(s)	
Comments: As Grown - No indication of post-growth treatment.	
This Laboratory Grown Diamond was created by High Pressure High Temperature (HPHT) growth process.	
Type II	



November 20, 2025
 IGI Report No LG749533646
 ROUND BRILLIANT

ROUND BRILLIANT	4.41 - 4.67 X 5.24 MM	2.27 CARATS	D	VVS 2	IDEAL	62%	55%	Medium Faceted	Pointed	Excellent	Excellent	None	4641 (27.053344)
	Carat Weight		Color Grade	Clarity Grade	Cut Grade	Depth	Table	Grades	Culet	Polish	Symmetry	Fluorescence	

Comments:
As Grown - No indication of post-growth treatment.