



**INTERNATIONAL
GEMOLOGICAL
INSTITUTE**

ELECTRONIC COPY

LABORATORY GROWN DIAMOND REPORT

| | |
|-------------------------|--------------------------|
| November 21, 2025 | |
| IGI Report Number | LG749533601 |
| Description | LABORATORY GROWN DIAMOND |
| Shape and Cutting Style | ROUND BRILLIANT |
| Measurements | 8.17 - 8.21 X 4.97 MM |
| GRADING RESULTS | |
| Carat Weight | 2.05 CARATS |
| Color Grade | E |
| Clarity Grade | VVS 1 |
| Cut Grade | IDEAL |

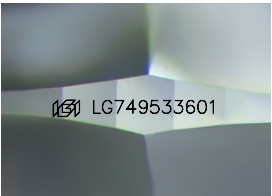
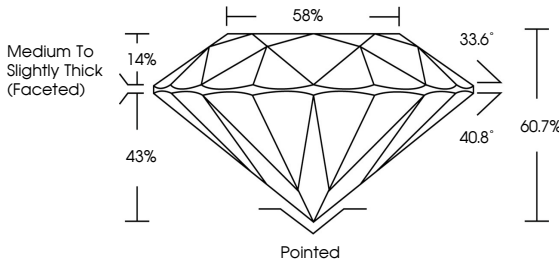
ADDITIONAL GRADING INFORMATION

| | |
|----------------|---|
| Polish | EXCELLENT |
| Symmetry | EXCELLENT |
| Fluorescence | NONE |
| Inscription(s) |  LG749533601 |

Comments: This Laboratory Grown Diamond was created by Chemical Vapor Deposition (CVD) growth process.
Type IIa

LG749533601
Report verification at igi.org

PROPORTIONS



Sample Image Used

COLOR

| | | | | | | | | | |
|---|---|---|---|---|---|---|-------|------------|-------|
| D | E | F | G | H | I | J | Faint | Very Light | Light |
|---|---|---|---|---|---|---|-------|------------|-------|

CLARITY

| FL | IF | VVS ¹⁻² | VS ¹⁻² | SI ¹⁻² | I ¹⁻³ |
|----------|---------------------|-----------------------------|------------------------|-------------------|------------------|
| Flawless | Internally Flawless | Very Very Slightly Included | Very Slightly Included | Slightly Included | Included |



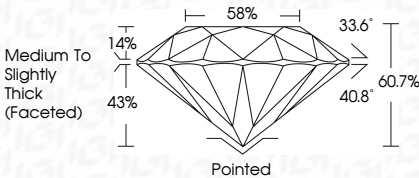
© IGI 2020, International Gemological Institute

www.igi.org

LABORATORY GROWN DIAMOND REPORT



| | |
|-------------------------|--------------------------|
| November 21, 2025 | |
| IGI Report Number | LG749533601 |
| Description | LABORATORY GROWN DIAMOND |
| Shape and Cutting Style | ROUND BRILLIANT |
| Measurements | 8.17 - 8.21 X 4.97 MM |
| GRADING RESULTS | |
| Carat Weight | 2.05 CARATS |
| Color Grade | E |
| Clarity Grade | VVS1 |
| Cut Grade | IDEAL |



ADDITIONAL GRADING INFORMATION

| | |
|---|------------------------|
| Polish | EXCELLENT |
| Symmetry | EXCELLENT |
| Fluorescence | NONE |
| Inscription(s) | LG749533601 |
| <p>Comments: This Laboratory Grown Diamond was created by Chemical Vapor Deposition (CVD) growth process.</p> <p>Type IIa</p> | |



IGI

| | |
|---|------------------------|
| Report No. 21, 2025 | Report No. LG749633001 |
| ROUND BRILLIANT | |
| 18.17 - 8.21 X 4.97 MM | |
| Color Grade | |
| Clarity Grade | |
| Cut Grade | |
| Depth | |
| Table | |
| Girdle | |
| Culet | |
| Polish | |
| Symmetry | |
| Fluorescence | |
| Inscriptions(s) | |
| Comments: | |
| This Laboratory Grown Diamond created by Chemical Vapor Deposition (CVD) growth process. Type IIa | |