



**ELECTRONIC COPY**

## LABORATORY GROWN DIAMOND REPORT

LG749533570  
Report verification at [igi.org](https://igi.org)

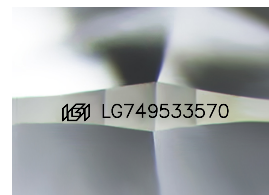
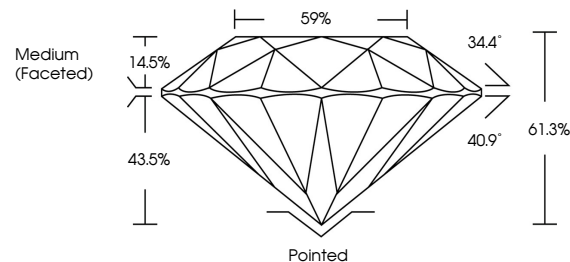
|                         |                          |
|-------------------------|--------------------------|
| November 20, 2025       |                          |
| IGI Report Number       | LG749533570              |
| Description             | LABORATORY GROWN DIAMOND |
| Shape and Cutting Style | ROUND BRILLIANT          |
| Measurements            | 8.10 - 8.14 X 4.98 MM    |
| GRADING RESULTS         |                          |
| Carat Weight            | 2.02 CARATS              |
| Color Grade             | D                        |
| Clarity Grade           | VVS 1                    |
| Cut Grade               | IDEAL                    |

### ADDITIONAL GRADING INFORMATION

|                |                |
|----------------|----------------|
| Polish         | EXCELLENT      |
| Symmetry       | EXCELLENT      |
| Fluorescence   | NONE           |
| Inscription(s) | 15 LG749533570 |

Comments: As Grown - No indication of post-growth treatment.  
This Laboratory Grown Diamond was created by High Pressure High Temperature (HPHT) growth process.  
Type II

## PROPORTIONS



Sample Image Used

## COLOR

D E F G H I J Faint Very Light Light

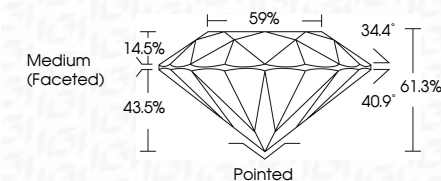
## CLARITY

| FL       | IF                  | VVS <sup>1-2</sup>          | VS <sup>1-2</sup>      | SI <sup>1-2</sup> | I <sup>1-3</sup> |
|----------|---------------------|-----------------------------|------------------------|-------------------|------------------|
| Flawless | Internally Flawless | Very Very Slightly Included | Very Slightly Included | Slightly Included | Included         |

## LABORATORY GROWN DIAMOND REPORT



|                         |                          |
|-------------------------|--------------------------|
| November 20, 2025       |                          |
| IGI Report Number       | LG749533570              |
| Description             | LABORATORY GROWN DIAMOND |
| Shape and Cutting Style | ROUND BRILLIANT          |
| Measurements            | 8.10 - 8.14 X 4.98 MM    |
| GRADING RESULTS         |                          |
| Carat Weight            | 2.02 CARATS              |
| Color Grade             | D                        |
| Clarity Grade           | VVS 1                    |
| Cut Grade               | IDEAL                    |



### ADDITIONAL GRADING INFORMATION

|  |                            |
|--|----------------------------|
| Polish   | EXCELLENT                  |
| Symmetry   | EXCELLENT                  |
| Fluorescence   | NONE                       |
| Inscription(s)   | <del>(G)</del> LG749533570 |
| <p>Comments: As Grown - No indication of post-growth treatment.</p> <p>This Laboratory Grown Diamond was created by High Pressure High Temperature (HPHT) growth process.</p> <p>Type II</p> |                            |



© IGI 2020, International Gemological Institute

FD - 10 20



THIS DOCUMENT WAS PRODUCED WITH THE FOLLOWING SECURITY MEASURES: SPECIAL DOCUMENT PAPER, INK SCREENS, WATERMARK, BACKGROUND DESIGNS, HOLOGRAM AND OTHER SECURITY FEATURES NOT LISTED AND DO EXCEED DOCUMENT SECURITY INDUSTRY GUIDELINES

**www.igi.org**

November 20, 2025  
GI Report No LG749533570  
ROUND BRILLIANT

8.10 - 8.14 X 4.98 MM

3.10 - 8.14 X 4.98 MM  
Carat Weight  
2.02 CARATS

| Catal weight % | ZUZ CARBALS |
|----------------|-------------|
| Color Grade    | D           |

| Clarity Grade | WS 1 |
|---------------|------|
|---------------|------|

| VS 1          | IDEAL |
|---------------|-------|
| Clarity Grade |       |
| Cut Grade     |       |

|       |       |
|-------|-------|
| Depth | 61.3% |
|-------|-------|

|        |                  |
|--------|------------------|
| Table  | 59%              |
| Girdle | Medium (6 weeks) |

Medium (Faceted)

|     | Culet | Pointed |
|-----|-------|---------|
| 1   |       |         |
| 2   |       |         |
| 3   |       |         |
| 4   |       |         |
| 5   |       |         |
| 6   |       |         |
| 7   |       |         |
| 8   |       |         |
| 9   |       |         |
| 10  |       |         |
| 11  |       |         |
| 12  |       |         |
| 13  |       |         |
| 14  |       |         |
| 15  |       |         |
| 16  |       |         |
| 17  |       |         |
| 18  |       |         |
| 19  |       |         |
| 20  |       |         |
| 21  |       |         |
| 22  |       |         |
| 23  |       |         |
| 24  |       |         |
| 25  |       |         |
| 26  |       |         |
| 27  |       |         |
| 28  |       |         |
| 29  |       |         |
| 30  |       |         |
| 31  |       |         |
| 32  |       |         |
| 33  |       |         |
| 34  |       |         |
| 35  |       |         |
| 36  |       |         |
| 37  |       |         |
| 38  |       |         |
| 39  |       |         |
| 40  |       |         |
| 41  |       |         |
| 42  |       |         |
| 43  |       |         |
| 44  |       |         |
| 45  |       |         |
| 46  |       |         |
| 47  |       |         |
| 48  |       |         |
| 49  |       |         |
| 50  |       |         |
| 51  |       |         |
| 52  |       |         |
| 53  |       |         |
| 54  |       |         |
| 55  |       |         |
| 56  |       |         |
| 57  |       |         |
| 58  |       |         |
| 59  |       |         |
| 60  |       |         |
| 61  |       |         |
| 62  |       |         |
| 63  |       |         |
| 64  |       |         |
| 65  |       |         |
| 66  |       |         |
| 67  |       |         |
| 68  |       |         |
| 69  |       |         |
| 70  |       |         |
| 71  |       |         |
| 72  |       |         |
| 73  |       |         |
| 74  |       |         |
| 75  |       |         |
| 76  |       |         |
| 77  |       |         |
| 78  |       |         |
| 79  |       |         |
| 80  |       |         |
| 81  |       |         |
| 82  |       |         |
| 83  |       |         |
| 84  |       |         |
| 85  |       |         |
| 86  |       |         |
| 87  |       |         |
| 88  |       |         |
| 89  |       |         |
| 90  |       |         |
| 91  |       |         |
| 92  |       |         |
| 93  |       |         |
| 94  |       |         |
| 95  |       |         |
| 96  |       |         |
| 97  |       |         |
| 98  |       |         |
| 99  |       |         |
| 100 |       |         |

|        |           |
|--------|-----------|
| Polish | EXCELLENT |
| Czech  | POOR      |

Symmetry

| Fluorescence      | NONE |
|-------------------|------|
| 1681   G749533570 |      |

Inscription(\$)  
 (K) LG/496336/U

**Comments:**  
As Grown - No Indication of post-growth

As Grown - No indication of post-growth treatment.

**This Laboratory Grown Diamond was  
Created by High Pressure High**

Temperature (HPHT) growth process.  
Type II