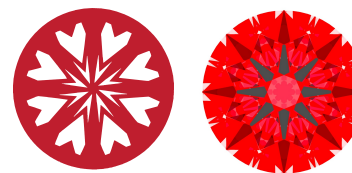
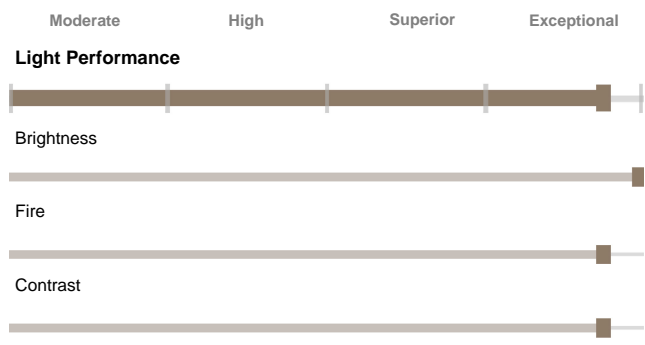




**Light Performance Grade: Exceptional**



**Structured Light Environment Representation**



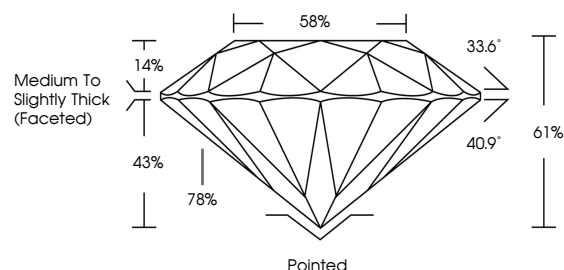
**COLOR**



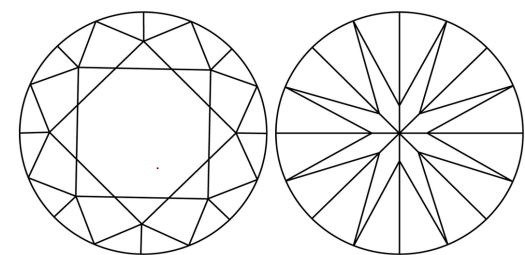
**CLARITY**



**PROPORTIONS**

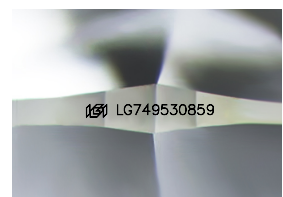


**CLARITY CHARACTERISTICS**



**KEY TO SYMBOLS**

Red symbols indicate internal characteristics.  
Green symbols indicate external characteristics.



Sample Image Used

**ELECTRONIC COPY**

**LABORATORY GROWN DIAMOND REPORT**

November 13, 2025  
IGI Report Number **LG749530859**  
Description **LABORATORY GROWN DIAMOND**  
Shape and Cutting Style **ROUND BRILLIANT**  
Measurements **9.28 - 9.32 x 5.67 mm**

**GRADING RESULTS**

Carat Weight **3.01 CARATS**  
Color Grade **D**  
Clarity Grade **VVS 1**  
Cut Grade **IDEAL**

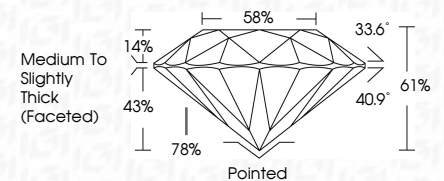
**ADDITIONAL GRADING INFORMATION**

Polish **EXCELLENT**  
Symmetry **EXCELLENT**  
Fluorescence **NONE**  
Inscription(s) **IGI LG749530859**

Comments: HEARTS & ARROWS  
This Laboratory Grown Diamond was created by Chemical Vapor Deposition (CVD) growth process. Type IIa



November 13, 2025  
IGI Report Number **LG749530859**  
Description **LABORATORY GROWN DIAMOND**  
Shape and Cutting Style **ROUND BRILLIANT**  
Measurements **9.28 - 9.32 X 5.67 MM**  
**GRADING RESULTS**  
Carat Weight **3.01 CARATS**  
Color Grade **D**  
Clarity Grade **VVS 1**  
Cut Grade **IDEAL**



**ADDITIONAL GRADING INFORMATION**

Polish **EXCELLENT**  
Symmetry **EXCELLENT**  
Fluorescence **NONE**  
Inscription(s) **IGI LG749530859**  
Comments: HEARTS & ARROWS  
This Laboratory Grown Diamond was created by Chemical Vapor Deposition (CVD) growth process. Type IIa



**IGI**

November 13, 2025	IGI Report No LG749530859	ROUND BRILLIANT	3.01 CARATS	D	VVS 1	IDEAL	61%	58%	Medium To Slightly Thick (Faceted)	Pointed	EXCELLENT	EXCELLENT	NONE	IGI LG749530859
9.28 - 9.32 X 5.67 MM	Carat Weight	Color Grade	Clarity Grade	Cut Grade	Depth	Table	Grade	Culet	Polish	Symmetry	Fluorescence	Inscription(s)	Comments: HEARTS & ARROWS	This Laboratory Grown Diamond was created by Chemical Vapor Deposition (CVD) growth process. Type IIa

