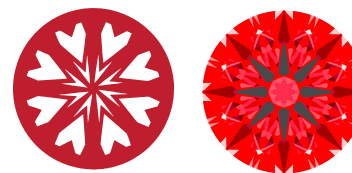




LG749530845  
Report verification at igi.org

**LIGHT PERFORMANCE REPORT**

**Light Performance Grade: Exceptional**



**Structured Light Environment Representation**



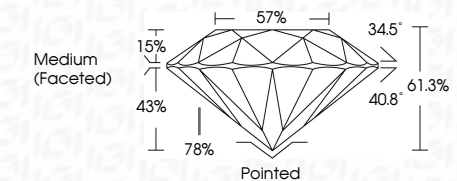
**COLOR**



**CLARITY**



November 13, 2025  
IGI Report Number **LG749530845**  
Description **LABORATORY GROWN DIAMOND**  
Shape and Cutting Style **ROUND BRILLIANT**  
Measurements **9.01 - 9.04 X 5.53 MM**  
**GRADING RESULTS**  
Carat Weight **2.74 CARATS**  
Color Grade **D**  
Clarity Grade **VS 1**  
Cut Grade **IDEAL**



**ADDITIONAL GRADING INFORMATION**  
Polish **EXCELLENT**  
Symmetry **EXCELLENT**  
Fluorescence **NONE**  
Inscription(s) **IGI LG749530845**  
Comments: HEARTS & ARROWS  
This Laboratory Grown Diamond was created by Chemical Vapor Deposition (CVD) growth process. Type IIa

**ELECTRONIC COPY  
LABORATORY GROWN DIAMOND REPORT**

November 13, 2025  
IGI Report Number **LG749530845**  
Description **LABORATORY GROWN DIAMOND**  
Shape and Cutting Style **ROUND BRILLIANT**  
Measurements **9.01 - 9.04 x 5.53 mm**

**GRADING RESULTS**

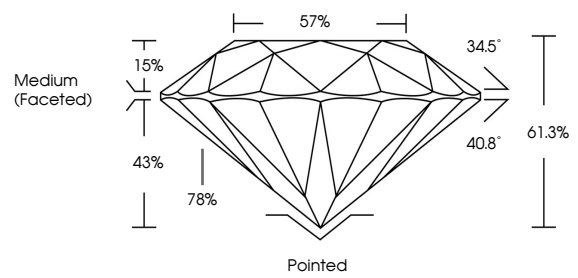
Carat Weight **2.74 CARATS**  
Color Grade **D**  
Clarity Grade **VS 1**  
Cut Grade **IDEAL**

**ADDITIONAL GRADING INFORMATION**

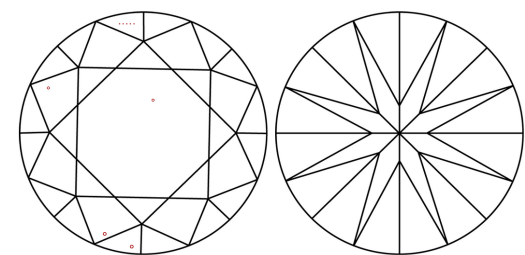
Polish **EXCELLENT**  
Symmetry **EXCELLENT**  
Fluorescence **NONE**  
Inscription(s) **IGI LG749530845**

Comments: HEARTS & ARROWS  
This Laboratory Grown Diamond was created by Chemical Vapor Deposition (CVD) growth process. Type IIa

**PROPORTIONS**

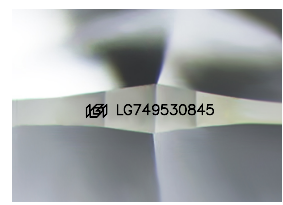


**CLARITY CHARACTERISTICS**



**KEY TO SYMBOLS**

Red symbols indicate internal characteristics.  
Green symbols indicate external characteristics.



Sample Image Used



November 13, 2025  
IGI Report No **LG749530845**  
**ROUND BRILLIANT**  
Carat Weight **2.74 CARATS**  
Color Grade **D**  
Clarity Grade **VS 1**  
Cut Grade **IDEAL**  
Depth **61.3%**  
Table **57%**  
Girdle **Medium (Faceted)**  
Polish **Excellent**  
Symmetry **Excellent**  
Fluorescence **None**  
Inscription(s) **IGI LG749530845**  
Comments: HEARTS & ARROWS  
This Laboratory Grown Diamond was created by Chemical Vapor Deposition (CVD) growth process. Type IIa