



November 17, 2025

IGI Report Number **LG749530215**

**PEAR BRILLIANT**

**LABORATORY GROWN DIAMOND**

**6.89 X 4.21 X 2.53 MM**

Carat Weight **0.44 CARAT**

Color Grade **D**

Clarity Grade **VVS 2**

Polish **VERY GOOD**

Symmetry **VERY GOOD**

Fluorescence **NONE**

Inscription(s) **IGI LG749530215**

Comments: This Laboratory Grown Diamond was created by Chemical Vapor Deposition (CVD) growth process. Type IIa

**LABORATORY GROWN DIAMOND REPORT**

November 17, 2025

IGI Report Number **LG749530215**

Description **LABORATORY GROWN DIAMOND**

Shape and Cutting Style **PEAR BRILLIANT**

Measurements **6.89 X 4.21 X 2.53 MM**

**GRADING RESULTS**

Carat Weight **0.44 CARAT**

Color Grade **D**

Clarity Grade **VVS 2**

**ADDITIONAL GRADING INFORMATION**

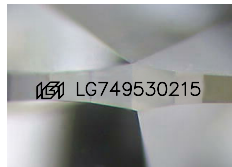
Polish **VERY GOOD**

Symmetry **VERY GOOD**

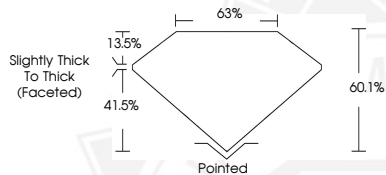
Fluorescence **NONE**

Inscription(s) **IGI LG749530215**

Comments: This Laboratory Grown Diamond was created by Chemical Vapor Deposition (CVD) growth process. Type IIa



Sample Image Used



November 17, 2025

IGI Report Number **LG749530215**

**PEAR BRILLIANT**

**LABORATORY GROWN DIAMOND**

**6.89 X 4.21 X 2.53 MM**

Carat Weight **0.44 CARAT**

Color Grade **D**

Clarity Grade **VVS 2**

Polish **VERY GOOD**

Symmetry **VERY GOOD**

Fluorescence **NONE**

Inscription(s) **IGI LG749530215**

Comments: This Laboratory Grown Diamond was created by Chemical Vapor Deposition (CVD) growth process. Type IIa



THIS DOCUMENT WAS PRODUCED WITH THE FOLLOWING SECURITY MEASURES: SPECIAL DOCUMENT PAPER, INK SCREENS, WATERMARK, BACKGROUND DESIGNS, HOLOGRAM AND OTHER SECURITY FEATURES NOT LISTED AND DO EXCEED DOCUMENT SECURITY INDUSTRY GUIDELINES.