



**ELECTRONIC COPY**

## LABORATORY GROWN DIAMOND REPORT

|                         |                          |
|-------------------------|--------------------------|
| November 19, 2025       |                          |
| IGI Report Number       | LG749528215              |
| Description             | LABORATORY GROWN DIAMOND |
| Shape and Cutting Style | ROUND BRILLIANT          |
| Measurements            | 6.41 - 6.44 X 4.14 MM    |

## GRADING RESULTS

|               |            |
|---------------|------------|
| Carat Weight  | 1.07 CARAT |
| Color Grade   | D          |
| Clarity Grade | VS 1       |
| Cut Grade     | VERY GOOD  |

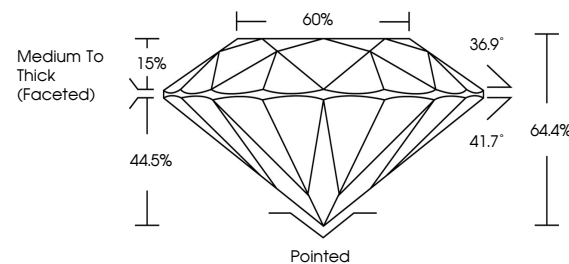
### ADDITIONAL GRADING INFORMATION

|                |   |
|----------------|---|
| Polish         | EXCELLENT   |
| Symmetry       | EXCELLENT   |
| Fluorescence   | NONE  |
| Inscription(s) |  LG749528215 |

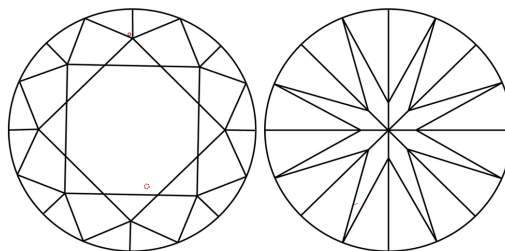
Comments: This Laboratory Grown Diamond was created by Chemical Vapor Deposition (CVD) growth process.  
Type IIa

LG749528215  
Report verification at [igi.org](https://igi.org)

## PROPORTIONS

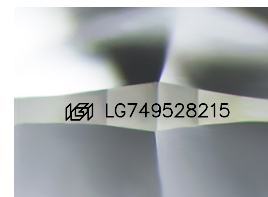


## CLARITY CHARACTERISTICS



## KEY TO SYMBOLS

Red symbols indicate internal characteristics.  
Green symbols indicate external characteristics.



Sample Image Used

## COLOR

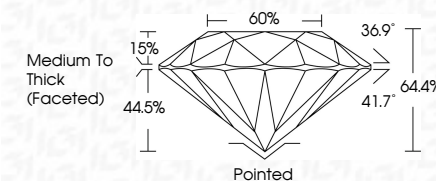
D E F G H I J Faint Very Light Light

## CLARITY

| FL       | IF                  | VVS <sup>1-2</sup>          | VS <sup>1-2</sup>      | SI <sup>1-2</sup> | I <sup>1-3</sup> |
|----------|---------------------|-----------------------------|------------------------|-------------------|------------------|
| Flawless | Internally Flawless | Very Very Slightly Included | Very Slightly Included | Slightly Included | Included         |



|                         |                          |
|-------------------------|--------------------------|
| November 19, 2025       |                          |
| IGI Report Number       | LG749528215              |
| Description             | LABORATORY GROWN DIAMOND |
| Shape and Cutting Style | ROUND BRILLIANT          |
| Measurements            | 6.41 - 6.44 X 4.14 MM    |
| GRADING RESULTS         |                          |
| Carat Weight            | 1.01 CARAT               |
| Color Grade             | D                        |
| Clarity Grade           | VS 1                     |
| Cut Grade               | VERY GOOD                |



### ADDITIONAL GRADING INFORMATION

|  |                            |
|--|----------------------------|
| Polish   | EXCELLENT                  |
| Symmetry   | EXCELLENT                  |
| Fluorescence   | NONE                       |
| Inscription(s)   | <del>153</del> LG749528215 |
| Comments: This Laboratory Grown Diamond was created by Chemical Vapor Deposition (CVD) growth process. |                            |
| Type IIa   |                            |



© IGI 2020, International Gemological Institute

FD - 10 20



THIS DOCUMENT WAS PRODUCED WITH THE FOLLOWING SECURITY MEASURES: SPECIAL DOCUMENT PAPER, INK SCREENS, WATERMARK, BACKGROUND DESIGNS, HOLOGRAM AND OTHER SECURITY FEATURES NOT LISTED AND DO EXCEED DOCUMENT SECURITY INDUSTRY GUIDELINES

November 19, 2025  
IGI Report No LG749528215  
ROUND BRILLIANT

|                     |              |             |               |           |       |       |                           |         |           |              |      |                        |
|---------------------|--------------|-------------|---------------|-----------|-------|-------|---------------------------|---------|-----------|--------------|------|------------------------|
| 6.41 - 6.4X 4.14 MM | 1.07 CARAT   | D           | VS1           | VERY GOOD | 64.4% | 65%   | Medium To Thick (Faceted) | Pointed | EXCELLENT | EXCELLENT    | NONE | cert 15740290215       |
| ROUND BRILLIANT     | Carat Weight | Color Grade | Clarity Grade | Cut Grade | Depth | Table | Girdle                    | Culet   | Symmetry  | Fluorescence |      | report no: 15740290215 |

**Comments:**  
This Laboratory Grown Diamond was  
created by Chemical Vapor Deposition  
(CVD) growth process.

**www.igi.org**