



**ELECTRONIC COPY**

## LABORATORY GROWN DIAMOND REPORT

LG749526057  
Report verification at [igi.org](https://igi.org)

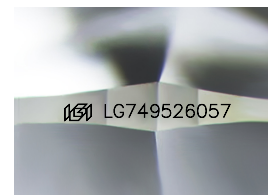
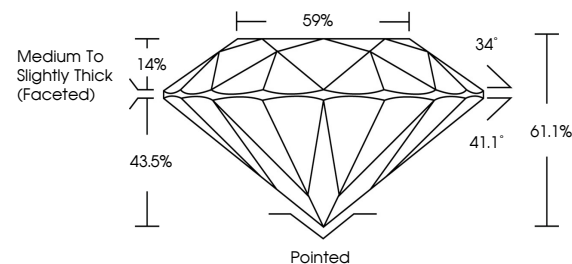
November 21, 2025	
IGI Report Number	LG749526057
Description	LABORATORY GROWN DIAMOND
Shape and Cutting Style	ROUND BRILLIANT
Measurements	7.40 - 7.44 X 4.53 MM
GRADING RESULTS	
Carat Weight	1.53 CARAT
Color Grade	D
Clarity Grade	VS 1
Cut Grade	IDEAL

### ADDITIONAL GRADING INFORMATION

Polish	EXCELLENT
Symmetry	EXCELLENT
Fluorescence	NONE
Inscription(s)	15 LG749526057

Comments: As Grown - No indication of post-growth treatment.  
This Laboratory Grown Diamond was created by High Pressure High Temperature (HPHT) growth process.  
Type II

## PROPORTIONS



Sample Image Used

COLOR

D E F G H I J Faint Very Light Light

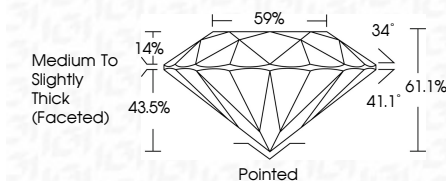
## CLARITY

FL	IF	VVS <sup>1-2</sup>	VS <sup>1-2</sup>	SI <sup>1-2</sup>	I <sup>1-3</sup>
Flawless	Internally Flawless	Very Very Slightly Included	Very Slightly Included	Slightly Included	Included

## LABORATORY GROWN DIAMOND REPORT



November 21, 2025	
IGI Report Number	LG749526057
Description	LABORATORY GROWN DIAMOND
Shape and Cutting Style	ROUND BRILLIANT
Measurements	7.40 - 7.44 X 4.53 MM
GRADING RESULTS	
Carat Weight	1.53 CARAT
Color Grade	D
Clarity Grade	VS 1
Cut Grade	IDEAL



### ADDITIONAL GRADING INFORMATION

Polish	EXCELLENT
Symmetry	EXCELLENT
Fluorescence	NONE
Inscription(s)	<del>LG</del> LG749526057
<p>Comments: As Grown - No indication of post-growth treatment.</p> <p>This Laboratory Grown Diamond was created by High Pressure High Temperature (HPHT) growth process.</p> <p>Type II</p>	



© IGI 2020, International Gemological Institute

FD - 10 20



THIS DOCUMENT WAS PRODUCED WITH THE FOLLOWING SECURITY MEASURES: SPECIAL DOCUMENT PAPER, INK SCREENS, WATERMARK, BACKGROUND DESIGNS, HOLOGRAM, AND OTHER SECURITY FEATURES NOT LISTED AND DO EXCEED DOCUMENT SECURITY INDUSTRY GUIDELINES.

**www.igi.org**

November 21, 2025  
GI Report No LG749526057  
ROUND BRILLIANT

7.40 - 7.44 X 4.53 MM

7.40 - 7.44 X 4.53 MM  
Carat Weight 1.53 CARAT

Catal Weight II	I.35 Catal
Color Grade	D

Clarity Grade	VS 1
---------------	------

Depth	Cut Grade	IDEAL
41.10%		

Depth	61.1%
Table	59%

Girdle

Thick (Faceted)

Culet	Pointed
Polish	EXCELLENT

EXCELLENT

EXCELLENT

Symmetry

Fluorescence	NONE
Inscription(s)	1811 G749526057

Inscription(\$)  
 151 LG/4962806/

**Comments:**  
As Grown - No Indication of post-growth

**Treatment.** This Laboratory Grown Diamond was

This laboratory growth medium was created by High Pressure High Temperature (HPHT) growth process.

Type II