



ELECTRONIC COPY

LG749524771
Report verification at igi.org



November 13, 2025

IGI Report Number **LG749524771**

Description **LABORATORY GROWN DIAMOND**

Shape and Cutting Style **CUT CORNERED
RECTANGULAR MODIFIED
BRILLIANT**

Measurements **7.66 X 5.63 X 3.86 MM**

GRADING RESULTS

Carat Weight **1.52 CARAT**

Color Grade **E**

Clarity Grade **VS 1**

November 13, 2025

IGI Report Number **LG749524771**

Description **LABORATORY GROWN DIAMOND**

Shape and Cutting Style **CUT CORNERED RECTANGULAR
MODIFIED BRILLIANT**

Measurements **7.66 X 5.63 X 3.86 MM**

GRADING RESULTS

Carat Weight **1.52 CARAT**

Color Grade **E**

Clarity Grade **VS 1**

ADDITIONAL GRADING INFORMATION

Polish **VERY GOOD**

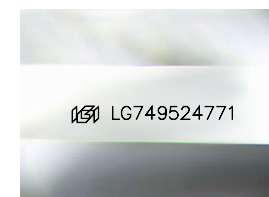
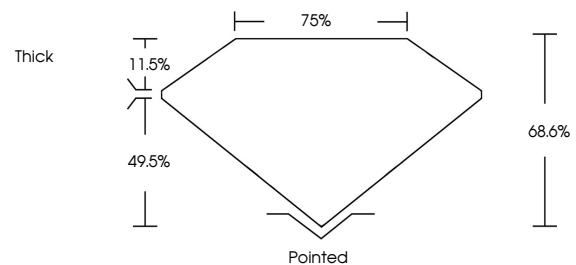
Symmetry **EXCELLENT**

Fluorescence **NONE**

Inscription(s) **IGI LG749524771**

Comments: This Laboratory Grown Diamond was created by Chemical Vapor Deposition (CVD) growth process. Type IIa

PROPORTIONS



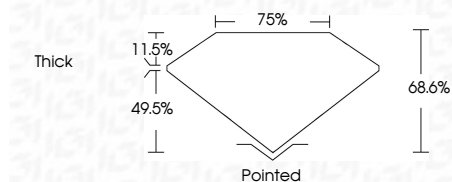
Sample Image Used

COLOR

D E F G H I J Faint Very Light Light

CLARITY

| FL | IF | VS ¹⁻² | VS ¹⁻² | SI ¹⁻² | I ¹⁻³ |
|----------|---------------------|-----------------------------|------------------------|-------------------|------------------|
| Flawless | Internally Flawless | Very Very Slightly Included | Very Slightly Included | Slightly Included | Included |



ADDITIONAL GRADING INFORMATION

Polish **VERY GOOD**

Symmetry **EXCELLENT**

Fluorescence **NONE**

Inscription(s) **IGI LG749524771**

Comments: This Laboratory Grown Diamond was created by Chemical Vapor Deposition (CVD) growth process. Type IIa



| | | | | | | | | | | | | | | | | | | |
|-------------------|---------------------------|---------------------------------------|-----------------------|------------|---|------|-------|-----|-------|---------|--------|-----------|----------|-----------|--------------|------|----------------|-----------------|
| November 13, 2025 | IGI Report No LG749524771 | CUT CORNERED RECT. MODIFIED BRILLIANT | 7.66 X 5.63 X 3.86 MM | 1.52 CARAT | E | VS 1 | 68.6% | 75% | Thick | Pointed | Polish | VERY GOOD | Symmetry | EXCELLENT | Fluorescence | NONE | Inscription(s) | IGI LG749524771 |
|-------------------|---------------------------|---------------------------------------|-----------------------|------------|---|------|-------|-----|-------|---------|--------|-----------|----------|-----------|--------------|------|----------------|-----------------|

Comments: This Laboratory Grown Diamond was created by Chemical Vapor Deposition (CVD) growth process. Type IIa