



ELECTRONIC COPY

LG749523423
Report verification at igi.org



November 18, 2025
IGI Report Number **LG749523423**
Description **LABORATORY GROWN DIAMOND**
Shape and Cutting Style **ROUND BRILLIANT**
Measurements **8.21 - 8.26 X 5.03 MM**
GRADING RESULTS
Carat Weight **2.09 CARATS**
Color Grade **D**
Clarity Grade **INTERNALLY FLAWLESS**
Cut Grade **IDEAL**

LABORATORY GROWN DIAMOND REPORT

November 18, 2025
IGI Report Number **LG749523423**
Description **LABORATORY GROWN DIAMOND**
Shape and Cutting Style **ROUND BRILLIANT**
Measurements **8.21 - 8.26 X 5.03 MM**

GRADING RESULTS

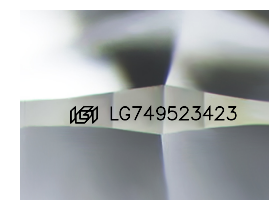
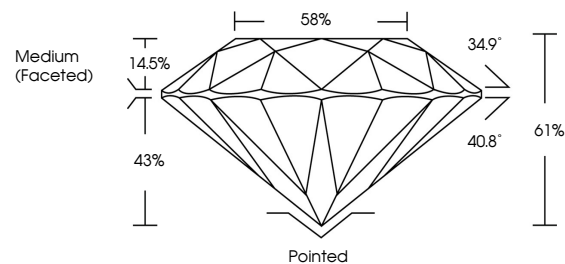
Carat Weight **2.09 CARATS**
Color Grade **D**
Clarity Grade **INTERNALLY FLAWLESS**
Cut Grade **IDEAL**

ADDITIONAL GRADING INFORMATION

Polish **EXCELLENT**
Symmetry **EXCELLENT**
Fluorescence **NONE**
Inscription(s) **LG749523423**

Comments: HEARTS & ARROWS
As Grown - No indication of post-growth treatment.
This Laboratory Grown Diamond was created by High Pressure High Temperature (HPHT) growth process.
Type II

PROPORTIONS



Sample Image Used

CLARITY CHARACTERISTICS



KEY TO SYMBOLS

Red symbols indicate internal characteristics.
Green symbols indicate external characteristics.

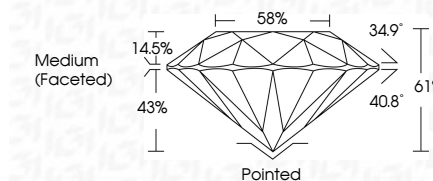


COLOR

D E F G H I J Faint Very Light Light

CLARITY

FL	IF	VS ¹⁻²	VS ¹⁻²	SI ¹⁻²	I ¹⁻³
Flawless	Internally Flawless	Very Very Slightly Included	Very Slightly Included	Slightly Included	Included



ADDITIONAL GRADING INFORMATION

Polish **EXCELLENT**
Symmetry **EXCELLENT**
Fluorescence **NONE**
Inscription(s) **LG749523423**
Comments: HEARTS & ARROWS
As Grown - No indication of post-growth treatment.
This Laboratory Grown Diamond was created by High Pressure High Temperature (HPHT) growth process.
Type II



November 18, 2025
IGI Report No **LG749523423**
ROUND BRILLIANT
2.09 CARATS
Carat Weight **D**
Color Grade **IF**
Clarity Grade **IDEAL**
Depth **61%**
Table **58%**
Girdle **Medium (Faceted)**
Culet **Pointed**
Polish **EXCELLENT**
Symmetry **EXCELLENT**
Fluorescence **NONE**
Inscriptions(s) **LG749523423**
Comments: **HEARTS & ARROWS**
As Grown - No indication of post-growth treatment.
This Laboratory Grown Diamond was created by High Pressure High Temperature (HPHT) growth process.
Type II