



**ELECTRONIC COPY**

## LABORATORY GROWN DIAMOND REPORT

November 12, 2025	
IGI Report Number	LG749520933
Description	LABORATORY GROWN DIAMOND
Shape and Cutting Style	ROUND BRILLIANT
Measurements	8.82 - 8.86 X 5.44 MM

## GRADING RESULTS

Carat Weight	2.61 CARATS
Color Grade	F
Clarity Grade	VVS 2
Cut Grade	IDEAL

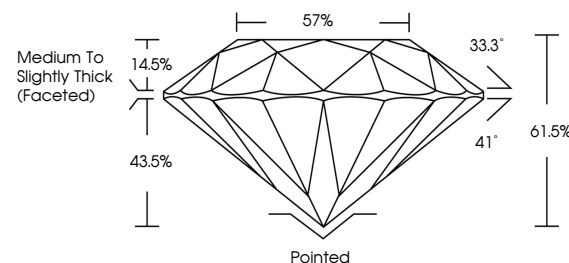
### ADDITIONAL GRADING INFORMATION

Polish	EXCELLENT
Symmetry	EXCELLENT
Fluorescence	NONE
Inscription(s)	15 LG749520933

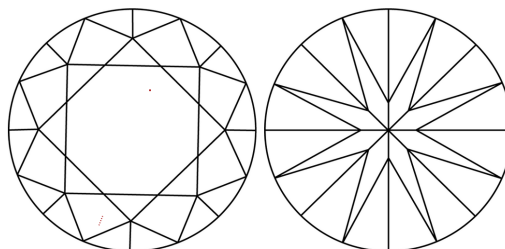
Comments: This Laboratory Grown Diamond was created by Chemical Vapor Deposition (CVD) growth process.  
Type IIa

LG749520933  
Report verification at [lgi.org](https://lgi.org)

## PROPORTIONS

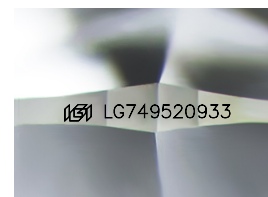


## CLARITY CHARACTERISTICS



### KEY TO SYMBOLS

Red symbols indicate internal characteristics.  
Green symbols indicate external characteristics.



Sample Image Used

## COLOR

D E F G H I J Faint Very Light Light

## CLARITY

FL	IF	VVS <sup>1-2</sup>	VS <sup>1-2</sup>	SI <sup>1-2</sup>	I <sup>1-3</sup>
Flawless	Internally Flawless	Very Very Slightly Included	Very Slightly Included	Slightly Included	Included

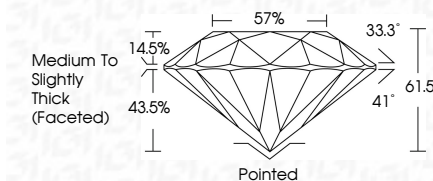
## LABORATORY GROWN DIAMOND REPORT



November 12, 2025	
IGI Report Number	LG749520933
Description	LABORATORY GROWN DIAMOND
Shape and Cutting Style	ROUND BRILLIANT
Measurements	8.82 - 8.86 X 5.44 MM

## GRADING RESULTS

Carat Weight	2.61 CARATS
Color Grade	F
Clarity Grade	VVS 2
Cut Grade	IDEAL



### ADDITIONAL GRADING INFORMATION

Polish	EXCELLENT
Symmetry	EXCELLENT
Fluorescence	NONE
Inscription(s)	<del>(G)</del> LG749520933
Comments: This Laboratory Grown Diamond was created by Chemical Vapor Deposition (CVD) growth process.	
Type IIa	



© IGI 2020, International Gemological Institute

FD - 10 20



THIS DOCUMENT WAS PRODUCED WITH THE FOLLOWING SECURITY MEASURES: SPECIAL DOCUMENT PAPER, INK SCREENS, WATERMARK, BACKGROUND DESIGNS, HOLOGRAM AND OTHER SECURITY FEATURES NOT LISTED AND DO EXCEED DOCUMENT SECURITY INDUSTRY GUIDELINE

**www.igi.org**

November 12, 2025  
GI Report No LG749520933  
ROUND BRILLIANT

<b>ROUND BRILLIANT</b>	<b>0.89 - 0.96 X 5.44 MM</b>	<b>2.61 CARATS</b>	<b>F</b>	<b>VVS 2</b>	<b>IDEAL</b>	<b>57%</b>	<b>Medium To Slightly Thick Faceted</b>	<b>Poished</b>	<b>EXCELLENT</b>	<b>BETTER</b>	<b>NONE</b>	<b>See Certificate</b>
	<b>Carat Weight</b>		<b>Color Grade</b>	<b>Clarity Grade</b>	<b>Cut Grade</b>	<b>Depth %</b>	<b>Table %</b>	<b>Symmetry</b>	<b>Fluorescence</b>			
	<b>Girdle</b>					<b>%</b>	<b>Grade</b>	<b>Quilted</b>	<b>Polish</b>			

**Comments:**  
This Laboratory Grown Diamond was  
created by Chemical Vapor Deposition  
(CVD) growth process.