



**ELECTRONIC COPY**

## LABORATORY GROWN DIAMOND REPORT

November 14, 2025	
IGI Report Number	LG749520463
Description	LABORATORY GROWN DIAMOND
Shape and Cutting Style	EMERALD CUT
Measurements	8.59 X 5.96 X 4.10 MM

## GRADING RESULTS

Carat Weight	2.08 CARATS
Color Grade	G
Clarity Grade	VVS 2

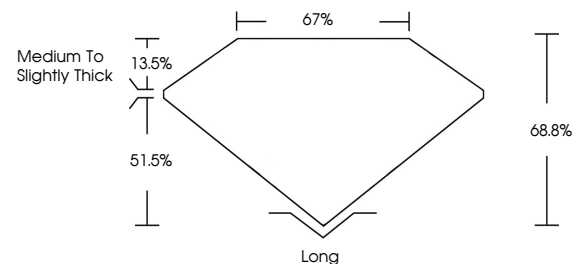
### ADDITIONAL GRADING INFORMATION

Polish	EXCELLENT
Symmetry	EXCELLENT
Fluorescence	NONE
Inscription(s)	 LG749520463

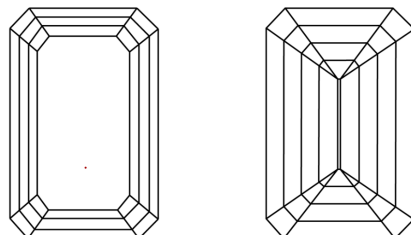
Comments: This Laboratory Grown Diamond was created by Chemical Vapor Deposition (CVD) growth process.  
Type IIa

LG749520463  
Report verification at [igi.org](https://igi.org)

## PROPORTIONS

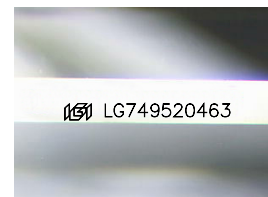


## CLARITY CHARACTERISTICS



## KEY TO SYMBOLS

Red symbols indicate internal characteristics.  
Green symbols indicate external characteristics.



Sample Image Used

## COLOR

D E F G H I J Faint Very Light Light

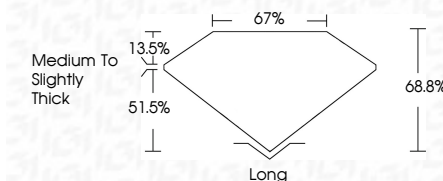
## CLARITY

FL	IF	VVS <sup>1-2</sup>	VS <sup>1-2</sup>	SI <sup>1-2</sup>	I <sup>1-3</sup>
Flawless	Internally Flawless	Very Very Slightly Included	Very Slightly Included	Slightly Included	Included

## LABORATORY GROWN DIAMOND REPORT



November 14, 2025	
IGI Report Number	LG749520463
Description	LABORATORY GROWN DIAMOND
Shape and Cutting Style	EMERALD CUT
Measurements	8.59 X 5.96 X 4.10 MM
GRADING RESULTS	
Carat Weight	2.08 CARATS
Color Grade	G
Clarity Grade	VVS 2



### ADDITIONAL GRADING INFORMATION

Polish	EXCELLENT
Symmetry	EXCELLENT
Fluorescence	NONE
Inscription(s)	 LG749520463
<p>Comments: This Laboratory Grown Diamond was created by Chemical Vapor Deposition (CVD) growth process.</p> <p>Type IIa</p>	



© IGI 2020, International Gemological Institute

FD - 10 20

**www.igi.org**



THIS DOCUMENT WAS PRODUCED WITH THE FOLLOWING SECURITY MEASURES: SPECIAL DOCUMENT PAPER, INK SCREENS, WATERMARK, BACKGROUND DESIGNS, HOLOGRAM AND OTHER SECURITY FEATURES NOT LISTED AND DO EXCEED DOCUMENT SECURITY INDUSTRY GUIDELINE

November 14, 2025  
GI Report No LG749520463

<p> <b>GL Report No. LG749520A63</b>  <b>GENERAL CUT</b>  <b>5.95 X 5.95 X 4.10 MM</b> </p>	<p> <b>2.08 CARATS</b>  <b>WVS 2</b>  <b>68.8%</b>  <b>67%</b>  <b>Medium To Slightly Thick</b> </p>	<p> <b>Long</b>  <b>Excellent</b>  <b>Excellent</b>  <b>None</b>  <b>None</b> </p>
<p> <b>Color Weight</b>  <b>Color Grade</b>  <b>Clarity Grade</b>  <b>Depth</b>  <b>Table</b>  <b>Girdle</b> </p>	<p> <b>Carat Weight</b>  <b>Color Grade</b>  <b>Clarity Grade</b>  <b>Depth</b>  <b>Table</b>  <b>Girdle</b> </p>	<p> <b>Long</b>  <b>Excellent</b>  <b>Excellent</b>  <b>None</b>  <b>None</b> </p>

**Comments:**  
This Laboratory Grown Diamond was created by Chemical Vapor Deposition (CVD) growth process.