



ELECTRONIC COPY

LG749519548
Report verification at igi.org



November 22, 2025

IGI Report Number **LG749519548**

Description **LABORATORY GROWN DIAMOND**

Shape and Cutting Style **KITE STEP CUT**

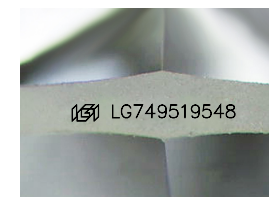
Measurements **12.45 X 6.53 X 4.10 MM**

GRADING RESULTS

Carat Weight **1.61 CARAT**

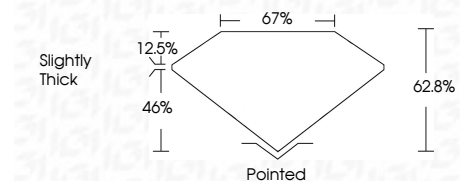
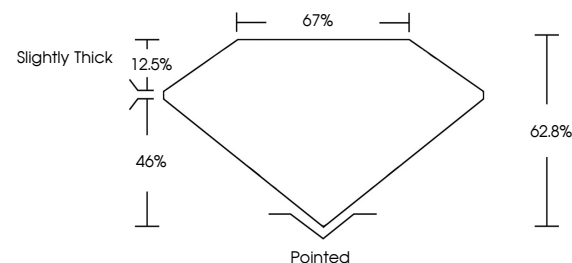
Color Grade **F**

Clarity Grade **VVS 2**

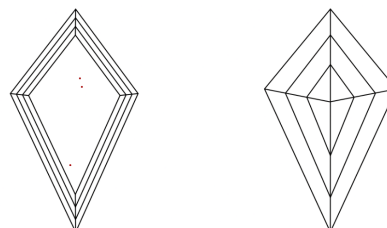


Sample Image Used

PROPORTIONS



CLARITY CHARACTERISTICS



KEY TO SYMBOLS

Red symbols indicate internal characteristics.
Green symbols indicate external characteristics.

COLOR

D E F G H I J Faint Very Light Light

CLARITY

FL	IF	VVS ¹⁻²	VS ¹⁻²	SI ¹⁻²	I ¹⁻³
Flawless	Internally Flawless	Very Very Slightly Included	Very Slightly Included	Slightly Included	Included

ADDITIONAL GRADING INFORMATION

Polish **EXCELLENT**

Symmetry **EXCELLENT**

Fluorescence **NONE**

Inscription(s) **IGI LG749519548**

Comments: This Laboratory Grown Diamond was created by Chemical Vapor Deposition (CVD) growth process. Type IIa



IGI

November 22, 2025	1.61 CARAT	F	VVS 2	62.8%	67%	Slightly Thick	Pointed
IGI Report No LG749519548	12.45 X 6.53 X 4.10 MM	KITE STEP CUT	EXCELLENT	EXCELLENT	EXCELLENT	NONE	IGI LG749519548
Carat Weight	Color Grade	Clarity Grade	Depth	Table	Graile	Culet	Polish
Symmetry	Fluorescence	Inscription(s)	Comments: This Laboratory Grown Diamond was created by Chemical Vapor Deposition (CVD) growth process. Type IIa				