



**ELECTRONIC COPY**

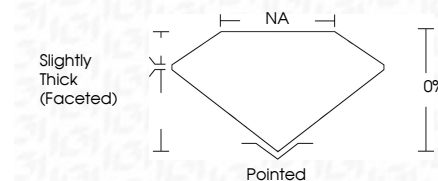
LG749519507  
Report verification at igi.org



November 24, 2025  
IGI Report Number **LG749519507**  
Description **LABORATORY GROWN DIAMOND**  
Shape and Cutting Style **FLOWER MODIFIED BRILLIANT**  
Measurements **6.97 X 6.92 X 4.27 MM**

**GRADING RESULTS**

Carat Weight **1.17 CARAT**  
Color Grade **E**  
Clarity Grade **VVS 2**



**ADDITIONAL GRADING INFORMATION**

Polish **EXCELLENT**  
Symmetry **EXCELLENT**  
Fluorescence **NONE**  
Inscription(s) **IGI LG749519507**  
Comments: This Laboratory Grown Diamond was created by Chemical Vapor Deposition (CVD) growth process. Type IIa



November 24, 2025  
IGI Report No LG749519507  
**FLOWER MODIFIED BRILLIANT**  
6.97 X 6.92 X 4.27 MM  
1.17 CARAT  
E  
VVS 2  
0%  
NA  
Slightly Thick (Faceted)  
Pointed  
EXCELLENT  
EXCELLENT  
NONE  
IGI LG749519507  
Comments: This Laboratory Grown Diamond was created by Chemical Vapor Deposition (CVD) growth process. Type IIa

**LABORATORY GROWN DIAMOND REPORT**

November 24, 2025  
IGI Report Number **LG749519507**  
Description **LABORATORY GROWN DIAMOND**  
Shape and Cutting Style **FLOWER MODIFIED BRILLIANT**  
Measurements **6.97 X 6.92 X 4.27 MM**

**GRADING RESULTS**

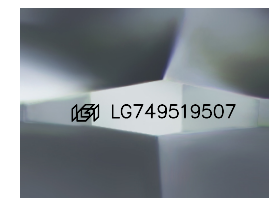
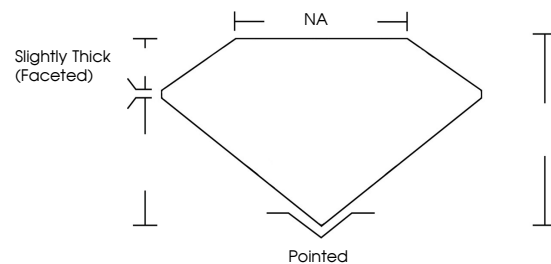
Carat Weight **1.17 CARAT**  
Color Grade **E**  
Clarity Grade **VVS 2**

**ADDITIONAL GRADING INFORMATION**

Polish **EXCELLENT**  
Symmetry **EXCELLENT**  
Fluorescence **NONE**  
Inscription(s) **IGI LG749519507**

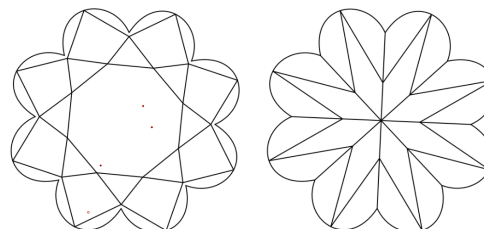
Comments: This Laboratory Grown Diamond was created by Chemical Vapor Deposition (CVD) growth process. Type IIa

**PROPORTIONS**



Sample Image Used

**CLARITY CHARACTERISTICS**



**KEY TO SYMBOLS**

Red symbols indicate internal characteristics.  
Green symbols indicate external characteristics.

**COLOR**

D E F G H I J Faint Very Light Light

**CLARITY**

FL	IF	VVS <sup>1-2</sup>	VS <sup>1-2</sup>	SI <sup>1-2</sup>	I <sup>1-3</sup>
Flawless	Internally Flawless	Very Very Slightly Included	Very Slightly Included	Slightly Included	Included

