



**ELECTRONIC COPY**

## LABORATORY GROWN DIAMOND REPORT

|                         |                          |
|-------------------------|--------------------------|
| November 19, 2025       |                          |
| IGI Report Number       | LG749519167              |
| Description             | LABORATORY GROWN DIAMOND |
| Shape and Cutting Style | ROUND BRILLIANT          |
| Measurements            | 8.71 - 8.75 X 5.29 MM    |

## GRADING RESULTS

|               |             |
|---------------|-------------|
| Carat Weight  | 2.51 CARATS |
| Color Grade   | D           |
| Clarity Grade | VS 2        |
| Cut Grade     | IDEAL       |

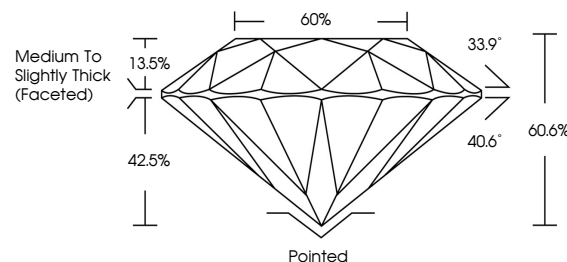
### ADDITIONAL GRADING INFORMATION

|                |   |
|----------------|---|
| Polish         | EXCELLENT   |
| Symmetry       | EXCELLENT   |
| Fluorescence   | NONE  |
| Inscription(s) |  LG749519167 |

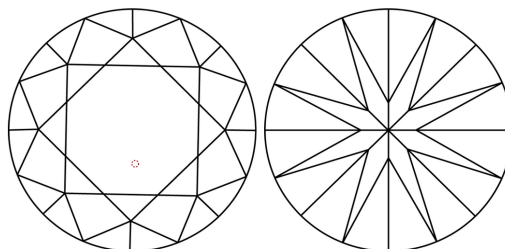
Comments: This Laboratory Grown Diamond was created by Chemical Vapor Deposition (CVD) growth process.  
Type IIa

LG749519167  
Report verification at [lgi.org](https://lgi.org)

## PROPORTIONS

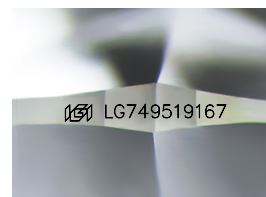


## CLARITY CHARACTERISTICS



### KEY TO SYMBOLS

Red symbols indicate internal characteristics.  
Green symbols indicate external characteristics.



Sample Image Used

## COLOR

D E F G H I J Faint Very Light Light

## CLARITY

| FL       | IF                  | VVS <sup>1-2</sup>          | VS <sup>1-2</sup>      | SI <sup>1-2</sup> | I <sup>1-3</sup> |
|----------|---------------------|-----------------------------|------------------------|-------------------|------------------|
| Flawless | Internally Flawless | Very Very Slightly Included | Very Slightly Included | Slightly Included | Included         |

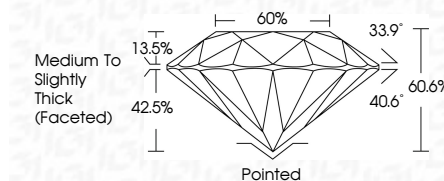
## LABORATORY GROWN DIAMOND REPORT



|                         |                          |
|-------------------------|--------------------------|
| November 19, 2025       |                          |
| IGI Report Number       | LG749519167              |
| Description             | LABORATORY GROWN DIAMOND |
| Shape and Cutting Style | ROUND BRILLIANT          |
| Measurements            | 8.71 - 8.75 X 5.29 MM    |

## GRADING RESULTS

|               |             |
|---------------|-------------|
| Carat Weight  | 2.51 CARATS |
| Color Grade   | D           |
| Clarity Grade | VS 2        |
| Cut Grade     | IDEAL       |



### ADDITIONAL GRADING INFORMATION

|   |                            |
|---|----------------------------|
| Polish  | EXCELLENT                  |
| Symmetry  | EXCELLENT                  |
| Fluorescence  | NONE                       |
| Inscription(s)  | <del>(G)</del> LG749519167 |
| <p>Comments: This Laboratory Grown Diamond was created by Chemical Vapor Deposition (CVD) growth process.</p> <p>Type IIa</p> |                            |



© IGI 2020, International Gemological Institute

FD - 10 20



THIS DOCUMENT WAS PRODUCED WITH THE FOLLOWING SECURITY MEASURES: SPECIAL DOCUMENT PAPER, INK SCREENS, WATERMARK, BACKGROUND DESIGNS, HOLOGRAM AND OTHER SECURITY FEATURES NOT LISTED AND DO EXCEED DOCUMENT SECURITY INDUSTRY GUIDELINE

**www.igi.org**

November 19, 2025  
 IGI Report No LG749519167  
 ROUND BRILLIANT

|                 |                       |             |   |      |       |       |        |                                  |         |           |           |              |                        |
|-----------------|-----------------------|-------------|---|------|-------|-------|--------|----------------------------------|---------|-----------|-----------|--------------|------------------------|
| ROUND BRILLIANT | 3.71 - 4.75 X 5.29 MM | 2.51 CARATS | D | VS 2 | IDEAL | 60%   | 65%    | Medium To Slightly Thick Faceted | Pointed | Excellent | Excellent | None         | Very Good to Excellent |
|                 | Carat Weight          |             |   |      |       |       |        |                                  |         |           |           |              |                        |
|                 | Color Grade           |             |   |      |       |       |        |                                  |         |           |           |              |                        |
|                 | Cut Grade             |             |   |      |       |       |        |                                  |         |           |           |              |                        |
|                 | Clarity Grade         |             |   |      |       |       |        |                                  |         |           |           |              |                        |
|                 |                       |             |   |      | Depth | Table | Grades |                                  | Clust   | Polish    | Symmetry  | Fluorescence |                        |

**Comments:**  
This Laboratory Grown Diamond was  
created by Chemical Vapor Deposition  
(CVD) growth process.