

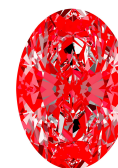


**INTERNATIONAL
GEMOLOGICAL
INSTITUTE**

LG749518306
Report verification at igi.org

LIGHT PERFORMANCE REPORT

Light Performance Grade: Exceptional



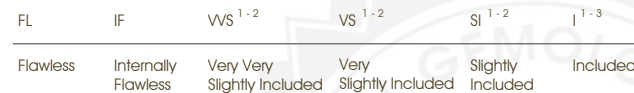
Structured Light Environment Representation



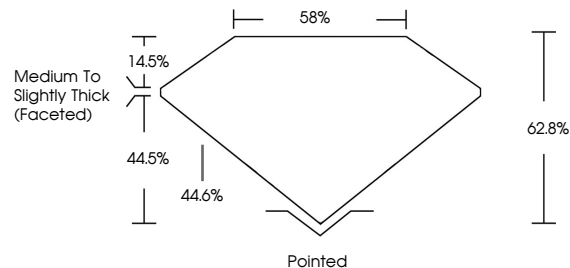
COLOR



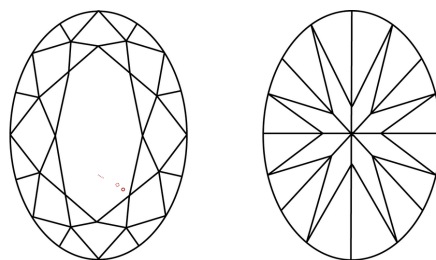
CLARITY



PROPORTIONS



CLARITY CHARACTERISTICS



KEY TO SYMBOLS

Red symbols indicate internal characteristics.
Green symbols indicate external characteristics.

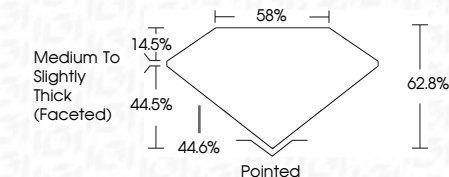


Sample Image Used

www.igi.org



November 12, 2025
IGI Report Number **LG749518306**
Description **LABORATORY GROWN DIAMOND**
Shape and Cutting Style **OVAL BRILLIANT**
Measurements **12.25 X 8.30 X 5.21 MM**
GRADING RESULTS
Carat Weight **3.30 CARATS**
Color Grade **E**
Clarity Grade **VS 1**



ADDITIONAL GRADING INFORMATION

Polish **EXCELLENT**
Symmetry **EXCELLENT**
Fluorescence **NONE**
Inscription(s) **IGI LG749518306**
Comments: This Laboratory Grown Diamond was created by Chemical Vapor Deposition (CVD) growth process.
Type IIa



IGI

November 12, 2025
IGI Report No LG749518306
OVAL BRILLIANT
12.25 X 8.30 X 5.21 MM
3.30 CARATS
Color Grade **E**
Clarity Grade **VS 1**
Depth **62.8%**
Table **56%**
Girdle **Medium To Slightly Thick (Faceted)**
Culet **Pointed**
Polish **EXCELLENT**
Symmetry **EXCELLENT**
Fluorescence **NONE**
Inscription(s) **IGI LG749518306**
Comments: This Laboratory Grown Diamond was created by Chemical Vapor Deposition (CVD) growth process.
Type IIa

