



ELECTRONIC COPY

LG749516233
Report verification at igi.org



November 18, 2025
IGI Report Number LG749516233
Description LABORATORY GROWN DIAMOND
Shape and Cutting Style CUSHION MODIFIED BRILLIANT
Measurements 12.84 X 9.78 X 6.22 MM
GRADING RESULTS
Carat Weight 7.02 CARATS
Color Grade FANCY VIVID YELLOW
Clarity Grade VVS 2

LABORATORY GROWN DIAMOND REPORT

November 18, 2025
IGI Report Number LG749516233
Description LABORATORY GROWN DIAMOND
Shape and Cutting Style CUSHION MODIFIED BRILLIANT
Measurements 12.84 X 9.78 X 6.22 MM

GRADING RESULTS

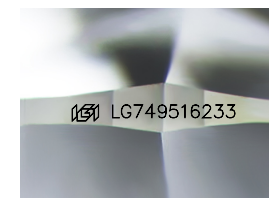
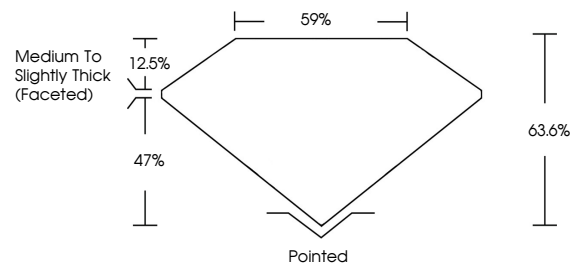
Carat Weight 7.02 CARATS
Color Grade FANCY VIVID YELLOW
Clarity Grade VVS 2

ADDITIONAL GRADING INFORMATION

Polish EXCELLENT
Symmetry EXCELLENT
Fluorescence NONE
Inscription(s) IGI LG749516233

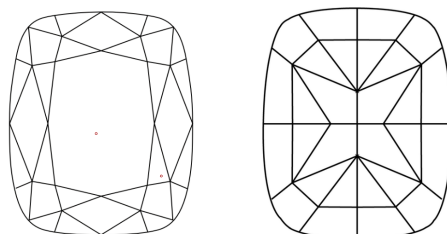
Comments: This Laboratory Grown Diamond was created by Chemical Vapor Deposition (CVD) growth process.

PROPORTIONS



Sample Image Used

CLARITY CHARACTERISTICS



KEY TO SYMBOLS

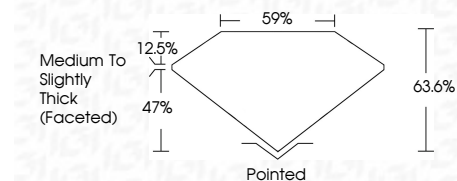
Red symbols indicate internal characteristics.
Green symbols indicate external characteristics.

COLOR

D E F G H I J Faint Very Light Light

CLARITY

FL IF VVS 1-2 VS 1-2 SI 1-2 I 1-3
Flawless Internally Flawless Very Very Slightly Included Very Slightly Included Slightly Included Included



ADDITIONAL GRADING INFORMATION

Polish EXCELLENT
Symmetry EXCELLENT
Fluorescence NONE
Inscription(s) IGI LG749516233
Comments: This Laboratory Grown Diamond was created by Chemical Vapor Deposition (CVD) growth process.



November 18, 2025
IGI Report No LG749516233
CUSHION MODIFIED BRILLIANT
12.84 X 9.78 X 6.22 MM
7.02 CARATS
FANCY VIVID YELLOW
VVS 2
63.6%
59%
Medium to Slightly Thick (Faceted)
Pointed
EXCELLENT
EXCELLENT
NONE
IGI LG749516233
Comments: This Laboratory Grown Diamond was created by Chemical Vapor Deposition (CVD) growth process.