



ELECTRONIC COPY

LG749513382
Report verification at igi.org



November 14, 2025

IGI Report Number **LG749513382**

Description **LABORATORY GROWN DIAMOND**

Shape and Cutting Style **CUSHION BRILLIANT**

Measurements **7.03 X 5.47 X 3.50 MM**

GRADING RESULTS

Carat Weight **1.10 CARAT**

Color Grade **FANCY PINK**

Clarity Grade **VS 2**

November 14, 2025
IGI Report Number **LG749513382**
Description **LABORATORY GROWN DIAMOND**
Shape and Cutting Style **CUSHION BRILLIANT**
Measurements **7.03 X 5.47 X 3.50 MM**

GRADING RESULTS

Carat Weight **1.10 CARAT**

Color Grade **FANCY PINK**

Clarity Grade **VS 2**

ADDITIONAL GRADING INFORMATION

Polish **EXCELLENT**

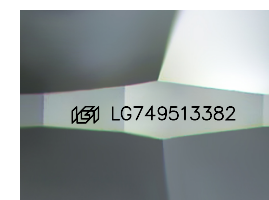
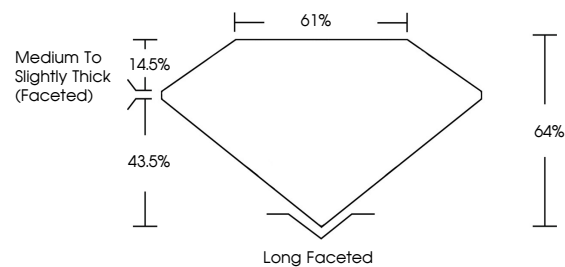
Symmetry **VERY GOOD**

Fluorescence **SLIGHT**

Inscription(s) **LG749513382**

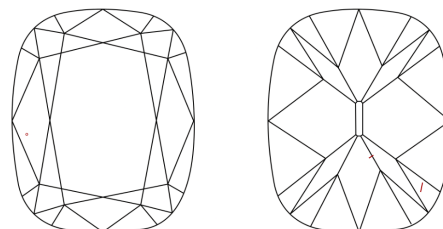
Comments: This Laboratory Grown Diamond was created by Chemical Vapor Deposition (CVD) growth process.
Indications of post-growth treatment.

PROPORTIONS



Sample Image Used

CLARITY CHARACTERISTICS



KEY TO SYMBOLS

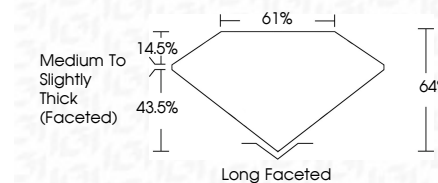
Red symbols indicate internal characteristics.
Green symbols indicate external characteristics.

COLOR

D E F G H I J Faint Very Light Light

CLARITY

FL	IF	VS ¹⁻²	VS ¹⁻²	SI ¹⁻²	I ¹⁻³
Flawless	Internally Flawless	Very Very Slightly Included	Very Slightly Included	Slightly Included	Included



ADDITIONAL GRADING INFORMATION

Polish **EXCELLENT**

Symmetry **VERY GOOD**

Fluorescence **SLIGHT**

Inscription(s) **LG749513382**

Comments: This Laboratory Grown Diamond was created by Chemical Vapor Deposition (CVD) growth process.
Indications of post-growth treatment.



IGI



November 14, 2025
IGI Report No LG749513382
CUSHION BRILLIANT

1.10 CARAT
FANCY PINK

Carat Weight
Color Grade
Clarity Grade
Depth
Table
Girdle

Medium to Slightly Thick (Faceted)
Long Faceted
EXCELLENT
VERY GOOD
SLIGHT
 LG749513382

Culet
Polish
Symmetry
Fluorescence
Inscription(s)

Comments: This Laboratory Grown Diamond was created by Chemical Vapor Deposition (CVD) growth process.
Indications of post-growth treatment.