



**ELECTRONIC COPY**

LG749511459  
Report verification at igi.org



November 11, 2025  
IGI Report Number **LG749511459**  
Description **LABORATORY GROWN DIAMOND**  
Shape and Cutting Style **CUSHION MODIFIED BRILLIANT**  
Measurements **13.37 X 10.25 X 6.99 MM**  
**GRADING RESULTS**  
Carat Weight **7.08 CARATS**  
Color Grade **E**  
Clarity Grade **VS 2**

November 11, 2025  
IGI Report Number **LG749511459**  
Description **LABORATORY GROWN DIAMOND**  
Shape and Cutting Style **CUSHION MODIFIED BRILLIANT**  
Measurements **13.37 X 10.25 X 6.99 MM**

**GRADING RESULTS**

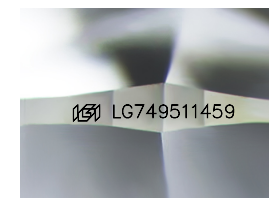
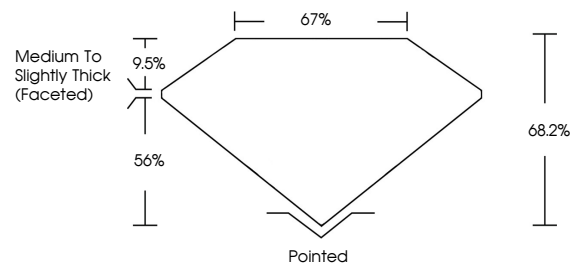
Carat Weight **7.08 CARATS**  
Color Grade **E**  
Clarity Grade **VS 2**

**ADDITIONAL GRADING INFORMATION**

Polish **EXCELLENT**  
Symmetry **EXCELLENT**  
Fluorescence **NONE**  
Inscription(s) **IGI LG749511459**

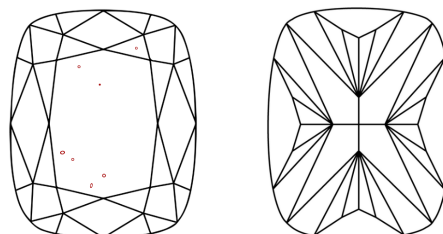
Comments: This Laboratory Grown Diamond was created by Chemical Vapor Deposition (CVD) growth process. Type IIa

**PROPORTIONS**



Sample Image Used

**CLARITY CHARACTERISTICS**



**KEY TO SYMBOLS**

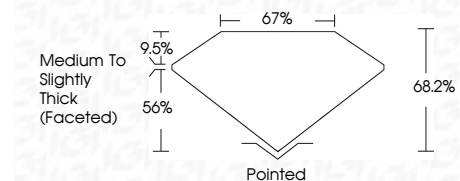
Red symbols indicate internal characteristics.  
Green symbols indicate external characteristics.

**COLOR**

D E F G H I J Faint Very Light Light

**CLARITY**

FL	IF	VS <sup>1-2</sup>	VS <sup>1-2</sup>	SI <sup>1-2</sup>	I <sup>1-3</sup>
Flawless	Internally Flawless	Very Very Slightly Included	Very Slightly Included	Slightly Included	Included



**ADDITIONAL GRADING INFORMATION**

Polish **EXCELLENT**  
Symmetry **EXCELLENT**  
Fluorescence **NONE**  
Inscription(s) **IGI LG749511459**  
Comments: This Laboratory Grown Diamond was created by Chemical Vapor Deposition (CVD) growth process. Type IIa



November 11, 2025  
IGI Report No **LG749511459**  
**CUSHION MODIFIED BRILLIANT**  
**13.37 X 10.25 X 6.99 MM**  
**7.08 CARATS**  
**E**  
**VS 2**  
**68.2%**  
**67%**  
Medium to Slightly Thick (Faceted)  
Pointed  
**EXCELLENT**  
**EXCELLENT**  
**NONE**  
**IGI LG749511459**  
Comments: This Laboratory Grown Diamond was created by Chemical Vapor Deposition (CVD) growth process. Type IIa