



ELECTRONIC COPY

LG749511270
Report verification at igi.org



November 12, 2025

IGI Report Number **LG749511270**

Description **LABORATORY GROWN DIAMOND**

Shape and Cutting Style **CUT CORNERED
RECTANGULAR MODIFIED
BRILLIANT**

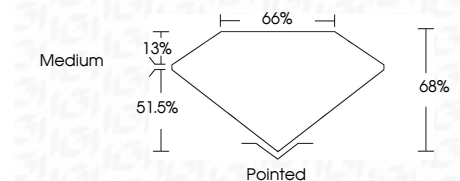
Measurements **7.17 X 4.93 X 3.35 MM**

GRADING RESULTS

Carat Weight **1.03 CARAT**

Color Grade **D**

Clarity Grade **VVS 2**



ADDITIONAL GRADING INFORMATION

Polish **EXCELLENT**

Symmetry **EXCELLENT**

Fluorescence **NONE**

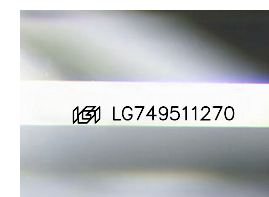
Inscription(s) **IGI LG749511270**

Comments: This Laboratory Grown Diamond was created by Chemical Vapor Deposition (CVD) growth process. Type IIa



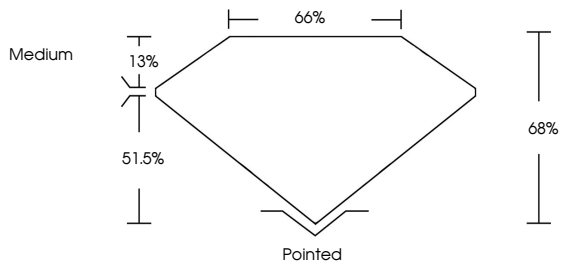
November 12, 2025	IGI Report No LG749511270	CUT CORNERED RECT. MODIFIED BRILLIANT
7.17 X 4.93 X 3.35 MM	1.03 CARAT	D
Color Grade	VVS 2	68%
Depth	51.5%	Medium
Table	Pointed	EXCELLENT
Grades	Symmetry	EXCELLENT
Culet	Fluorescence	NONE
Polish	Inscription(s)	IGI LG749511270

Comments: This Laboratory Grown Diamond was created by Chemical Vapor Deposition (CVD) growth process. Type IIa

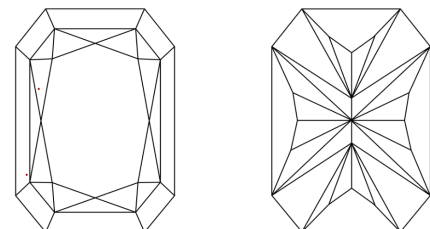


Sample Image Used

PROPORTIONS



CLARITY CHARACTERISTICS



KEY TO SYMBOLS

Red symbols indicate internal characteristics.
Green symbols indicate external characteristics.

COLOR

D	E	F	G	H	I	J	Faint	Very Light	Light
---	---	---	---	---	---	---	-------	------------	-------

CLARITY

FL	IF	VVS ¹⁻²	VS ¹⁻²	SI ¹⁻²	I ¹⁻³
Flawless	Internally Flawless	Very Very Slightly Included	Very Slightly Included	Slightly Included	Included

