



ELECTRONIC COPY

LABORATORY GROWN DIAMOND REPORT

| | |
|-------------------------|--------------------------|
| November 14, 2025 | |
| IGI Report Number | LG749510503 |
| Description | LABORATORY GROWN DIAMOND |
| Shape and Cutting Style | EMERALD CUT |
| Measurements | 9.65 X 7.15 X 4.73 MM |

GRADING RESULTS

| | |
|---------------|-------------|
| Carat Weight | 3.06 CARATS |
| Color Grade | D |
| Clarity Grade | VS 1 |

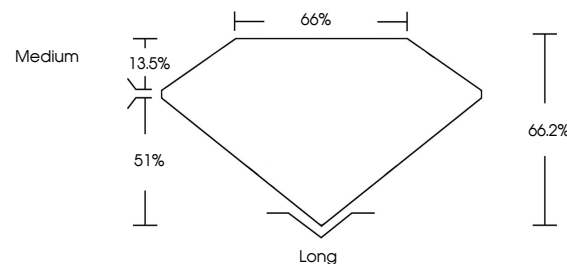
ADDITIONAL GRADING INFORMATION

| | |
|----------------|-----------------|
| Polish | EXCELLENT |
| Symmetry | EXCELLENT |
| Fluorescence | NONE |
| Inscription(s) | 151 LG749510503 |

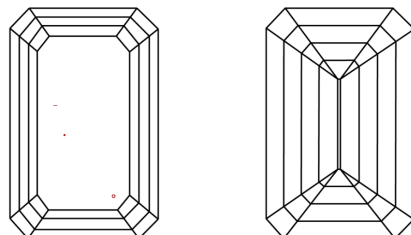
Comments: This Laboratory Grown Diamond was created by Chemical Vapor Deposition (CVD) growth process.
Type IIa

LG749510503
Report verification at lgi.org

PROPORTIONS

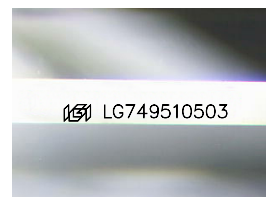


CLARITY CHARACTERISTICS



KEY TO SYMBOLS

Red symbols indicate internal characteristics.
Green symbols indicate external characteristics.



Sample Image Used

COLOR

D E F G H I J Faint Very Light Light

CLARITY

| FL | IF | VVS ¹⁻² | VS ¹⁻² | SI ¹⁻² | I ¹⁻³ |
|----------|---------------------|-----------------------------|------------------------|-------------------|------------------|
| Flawless | Internally Flawless | Very Very Slightly Included | Very Slightly Included | Slightly Included | Included |

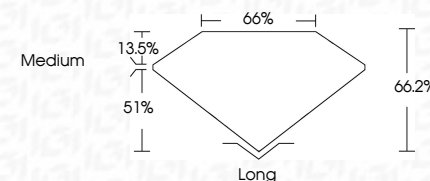
LABORATORY GROWN DIAMOND REPORT



| | |
|-------------------------|--------------------------|
| November 14, 2025 | |
| IGI Report Number | LG749510503 |
| Description | LABORATORY GROWN DIAMOND |
| Shape and Cutting Style | EMERALD CUT |
| Measurements | 9.65 X 7.15 X 4.73 MM |

GRADING RESULTS

| | |
|---------------|-------------|
| Carat Weight | 3.06 CARATS |
| Color Grade | D |
| Clarity Grade | VS 1 |



ADDITIONAL GRADING INFORMATION

| | |
|---|---|
| Polish | EXCELLENT |
| Symmetry | EXCELLENT |
| Fluorescence | NONE |
| Inscription(s) |  LG749510503 |
| <p>Comments: This Laboratory Grown Diamond was created by Chemical Vapor Deposition (CVD) growth process.</p> <p>Type IIa</p> | |



© IGI 2020, International Gemological Institute

FD - 10 20

www.igi.org

THIS DOCUMENT WAS PRODUCED WITH THE FOLLOWING SECURITY MEASURES: SPECIAL DOCUMENT PAPER, INK SCREENS, WATERMARK, BACKGROUND DESIGNS, HOLOGRAM AND OTHER SECURITY FEATURES NOT LISTED AND DO EXCEED DOCUMENT SECURITY INDUSTRY GUIDELINE

November 14, 2025
GI Report No LG749510503

| | |
|---------------|-------------|
| Carat Weight | 3.06 CARATS |
| Color Grade | D |
| Clarity Grade | VS 1 |
| Depth | 66.2% |
| Table | 66% |
| Grade | Medium |
| Culet | Long |
| Polish | EXCELLENT |
| Symmetry | EXCELLENT |
| Fluorescence | NONE |

Comments:
This Laboratory Grown Diamond was
created by Chemical Vapor Deposition
(CVD) growth process.