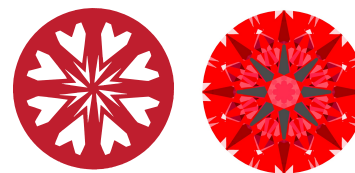




Light Performance Grade: Exceptional



Structured Light Environment Representation



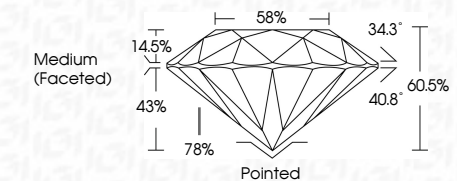
COLOR



CLARITY



November 11, 2025  
IGI Report Number: LG749509897  
Description: LABORATORY GROWN DIAMOND  
Shape and Cutting Style: ROUND BRILLIANT  
Measurements: 9.05 - 9.11 X 5.49 MM  
GRADING RESULTS  
Carat Weight: 2.75 CARATS  
Color Grade: E  
Clarity Grade: VVS 1  
Cut Grade: IDEAL



ADDITIONAL GRADING INFORMATION  
Polish: EXCELLENT  
Symmetry: EXCELLENT  
Fluorescence: NONE  
Inscription(s): IGI LG749509897  
Comments: HEARTS & ARROWS  
This Laboratory Grown Diamond was created by Chemical Vapor Deposition (CVD) growth process. Type IIa



Summary table of report details including date, report number, description, measurements, grading results, and additional information.

ELECTRONIC COPY  
LABORATORY GROWN DIAMOND REPORT

November 11, 2025  
IGI Report Number: LG749509897  
Description: LABORATORY GROWN DIAMOND  
Shape and Cutting Style: ROUND BRILLIANT  
Measurements: 9.05 - 9.11 x 5.49 mm

GRADING RESULTS

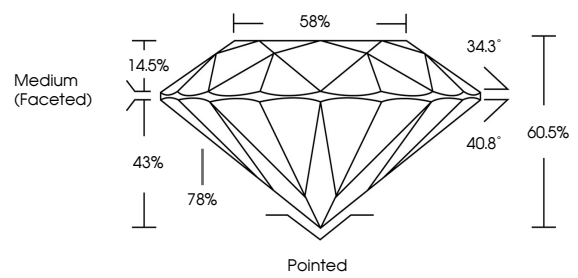
Carat Weight: 2.75 CARATS  
Color Grade: E  
Clarity Grade: VVS 1  
Cut Grade: IDEAL

ADDITIONAL GRADING INFORMATION

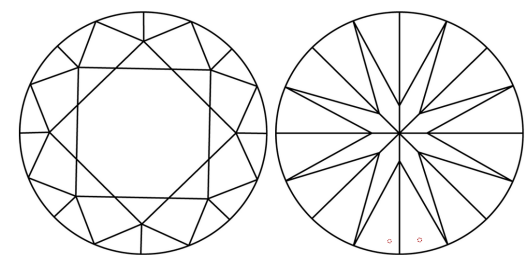
Polish: EXCELLENT  
Symmetry: EXCELLENT  
Fluorescence: NONE  
Inscription(s): IGI LG749509897

Comments: HEARTS & ARROWS  
This Laboratory Grown Diamond was created by Chemical Vapor Deposition (CVD) growth process. Type IIa

PROPORTIONS

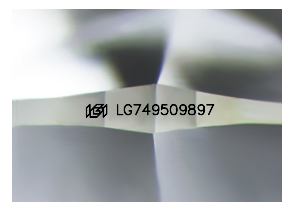


CLARITY CHARACTERISTICS



KEY TO SYMBOLS

Red symbols indicate internal characteristics.  
Green symbols indicate external characteristics.



Sample Image Used

