



November 20, 2025

IGI Report Number LG749509338

**ROUND BRILLIANT
LABORATORY GROWN DIAMOND
5.59 - 5.62 X 3.47 MM**

**0.67 CARAT
D
I.F.
IDEAL
EXCELLENT
EXCELLENT
NONE
NONE**

Inscription(s) IGI LG749509338
Comments: As Grown - No indication of post-growth treatment. This Laboratory Grown Diamond was created by High Pressure High Temperature (HPHT) growth process. Type II

LABORATORY GROWN DIAMOND REPORT

November 20, 2025
IGI Report Number **LG749509338**
Description **LABORATORY GROWN DIAMOND**
Shape and Cutting Style **ROUND BRILLIANT**
Measurements **5.59 - 5.62 X 3.47 MM**

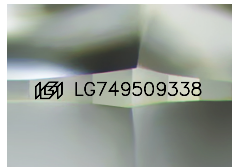
GRADING RESULTS

Carat Weight **0.67 CARAT**
Color Grade **D**
Clarity Grade **INTERNALLY FLAWLESS**
Cut Grade **IDEAL**

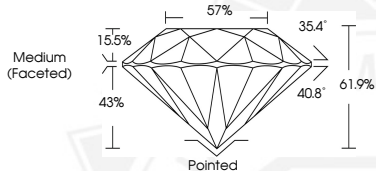
ADDITIONAL GRADING INFORMATION

Polish **EXCELLENT**
Symmetry **EXCELLENT**
Fluorescence **NONE**
Inscription(s) **IGI LG749509338**

Comments: As Grown - No indication of post-growth treatment. This Laboratory Grown Diamond was created by High Pressure High Temperature (HPHT) growth process. Type II



Sample Image Used



November 20, 2025

IGI Report Number LG749509338

**ROUND BRILLIANT
LABORATORY GROWN DIAMOND
5.59 - 5.62 X 3.47 MM**

**0.67 CARAT
D
I.F.
IDEAL
EXCELLENT
EXCELLENT
NONE
NONE**

Inscription(s) IGI LG749509338
Comments: As Grown - No indication of post-growth treatment. This Laboratory Grown Diamond was created by High Pressure High Temperature (HPHT) growth process. Type II



THIS DOCUMENT WAS PRODUCED WITH THE FOLLOWING SECURITY MEASURES: SPECIAL DOCUMENT PAPER, INK SCREENS, WATERMARK, BACKGROUND DESIGNS, HOLOGRAM AND OTHER SECURITY FEATURES NOT LISTED AND DO EXCEED DOCUMENT SECURITY INDUSTRY GUIDELINES.