



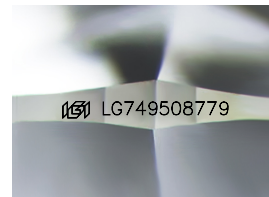
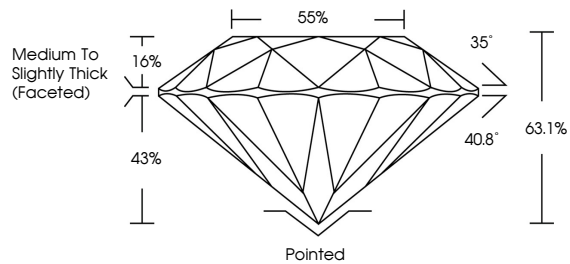
**INTERNATIONAL
GEMOLOGICAL
INSTITUTE**

ELECTRONIC COPY

LABORATORY GROWN DIAMOND REPORT

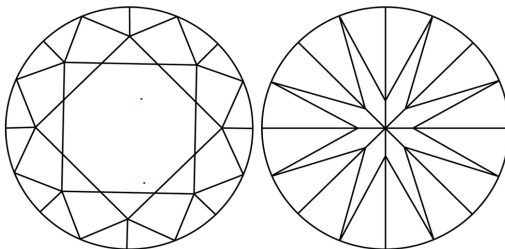
LG749508779
Report verification at igi.org

PROPORTIONS



Sample Image Used

CLARITY CHARACTERISTICS



KEY TO SYMBOLS

Red symbols indicate internal characteristics.
Green symbols indicate external characteristics.

COLOR

D E F G H I J Faint Very Light Light

CLARITY

FL IF WS¹⁻² VS¹⁻² SI¹⁻² I¹⁻³

| | | | | | |
|----------|---------------------|-----------------------------|------------------------|-------------------|----------|
| Flawless | Internally Flawless | Very Very Slightly Included | Very Slightly Included | Slightly Included | Included |
|----------|---------------------|-----------------------------|------------------------|-------------------|----------|

LABORATORY GROWN DIAMOND REPORT



November 13, 2025

IGI Report Number **LG749508779**

| | |
|-------------|--------------------------|
| Description | LABORATORY GROWN DIAMOND |
|-------------|--------------------------|

Shape and Cutting Style **ROUND BRILLIANT**

| | |
|--------------|-------------------------|
| Measurements | 10.00 - 10.03 X 6.32 MM |
|--------------|-------------------------|

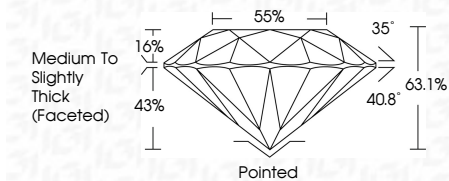
GRADING RESULTS

Carat Weight **3.94 CARATS**

| | |
|-------------|---|
| Color Grade | E |
|-------------|---|

Clarity Grade **VVS 2**

Cut Grade **EXCELLENT**



ADDITIONAL GRADING INFORMATION

Polish **EXCELLENCE**Symmetry **EXCELLENCE**

Fluorescence NONI

Inscription(s)  LG74950877

Comments: This Laboratory Grown Diamond was created by Chemical Vapor Deposition (CVD) growth process.
Type IIa



IG



© IGI 2020, International Gemological Institute

FD - 10 20

www.igi.org

THIS DOCUMENT WAS PRODUCED WITH THE FOLLOWING SECURITY MEASURES: SPECIAL DOCUMENT PAPER, INK SCREENS, WATERMARK, BACKGROUND DESIGNS, HOLOGRAM AND OTHER SECURITY FEATURES NOT LISTED AND DO EXCEED DOCUMENT SECURITY INDUSTRY GUIDELINES

November 13, 2025
IGI Report No LG749508779
ROUND BRILLIANT

| | | |
|-------------------------|------------------------------------|--|
| 10.00 - 10.03 X 4.32 MM | 3.94 CARATS | |
| Carat Weight | VVS 2 | |
| Color Grade | EXCELLENT | |
| Clarity Grade | 63.1% | |
| Cut Grade | 85% | |
| Depth | Medium to Slightly Thick (faceted) | |
| Table | | |
| Girdle | | |
| Culet | Pointed | |
| Polish | EXCELLENT | |
| Symmetry | EXCELLENT | |
| Fluorescence | NONE | |
| Comments | See LCT 00000720 | |

Comments:
This Laboratory Grown Diamond was created by Chemical Vapor Deposition (CVD) growth process.