



**ELECTRONIC COPY**

## LABORATORY GROWN DIAMOND REPORT

|                         |                          |
|-------------------------|--------------------------|
| November 14, 2025       |                          |
| IGI Report Number       | LG749508559              |
| Description             | LABORATORY GROWN DIAMOND |
| Shape and Cutting Style | PRINCESS CUT             |
| Measurements            | 9.35 X 9.19 X 6.58 MM    |

## GRADING RESULTS

|               |             |
|---------------|-------------|
| Carat Weight  | 5.05 CARATS |
| Color Grade   | E           |
| Clarity Grade | VS 1        |

### ADDITIONAL GRADING INFORMATION

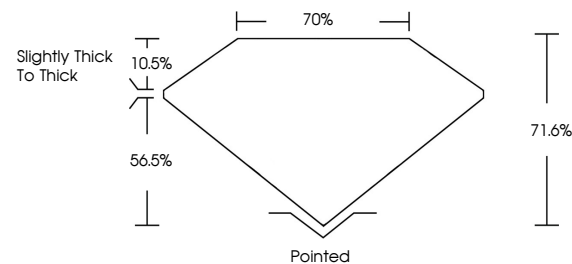
|              |           |
|--------------|-----------|
| Polish       | EXCELLENT |
| Symmetry     | EXCELLENT |
| Fluorescence | NONE      |

Inscription(s)  LG749508559

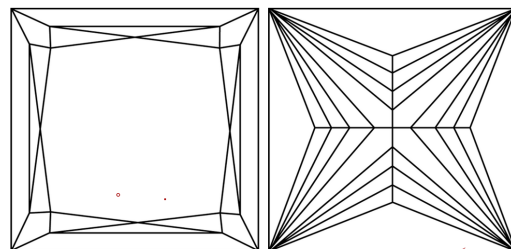
Comments: This Laboratory Grown Diamond was created by Chemical Vapor Deposition (CVD) growth process.  
Type IIa

LG749508559  
Report verification at [igi.org](https://igi.org)

## PROPORTIONS

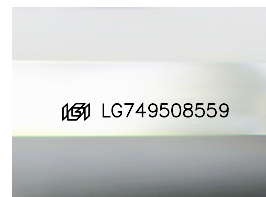


## CLARITY CHARACTERISTICS



## KEY TO SYMBOLS

Red symbols indicate internal characteristics.  
Green symbols indicate external characteristics.



Sample Image Used

**COLOR**

D E F G H I J Faint Very Light Light

## CLARITY

| FL       | IF                  | VVS <sup>1-2</sup>          | VS <sup>1-2</sup>      | SI <sup>1-2</sup> | I <sup>1-3</sup> |
|----------|---------------------|-----------------------------|------------------------|-------------------|------------------|
| Flawless | Internally Flawless | Very Very Slightly Included | Very Slightly Included | Slightly Included | Included         |

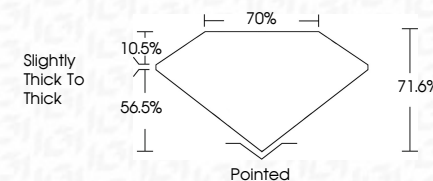
## LABORATORY GROWN DIAMOND REPORT



|                         |                          |
|-------------------------|--------------------------|
| November 14, 2025       |                          |
| IGI Report Number       | LG749508559              |
| Description             | LABORATORY GROWN DIAMOND |
| Shape and Cutting Style | PRINCESS CUT             |
| Measurements            | 9.35 X 9.19 X 6.58 MM    |

## GRADING RESULTS

|               |             |
|---------------|-------------|
| Carat Weight  | 5.05 CARATS |
| Color Grade   | E           |
| Clarity Grade | VS 1        |



### ADDITIONAL GRADING INFORMATION

|                |   |
|----------------|---|
| Polish         | EXCELLENT   |
| Symmetry       | EXCELLENT   |
| Fluorescence   | NONE  |
| Inscription(s) |  LG749508559 |

Comments: This Laboratory Grown Diamond was created by Chemical Vapor Deposition (CVD) growth process.  
Type IIa



© IGI 2020, International Gemological Institute

FD - 10 20

**www.igi.org**

THIS DOCUMENT WAS PRODUCED WITH THE FOLLOWING SECURITY MEASURES: SPECIAL DOCUMENT PAPER, INK SCREENS, WATERMARK, BACKGROUND DESIGNS, HOLOGRAM AND OTHER SECURITY FEATURES NOT LISTED AND DO EXCEED DOCUMENT SECURITY INDUSTRY GUIDELINE

November 14, 2025  
GI Report No LG749508559

|  |  |                         |                              |                       |                     |  |                         |                            |                              |                             |                                     |
|--|--|-------------------------|------------------------------|-----------------------|---------------------|--|-------------------------|----------------------------|------------------------------|-----------------------------|-------------------------------------|
| G1 Report No. LG749508559<br>FRANCIS CUT | Carat Weight<br><b>3.35 X 1.19 X 6.58 MM</b> | Color Grade<br><b>E</b> | Clarity Grade<br><b>VS 1</b> | Depth<br><b>71.6%</b> | Table<br><b>70%</b> | Girdle<br><b>Slightly Thick To Thick</b> | Culet<br><b>Pointed</b> | Polish<br><b>EXCELLENT</b> | Symmetry<br><b>EXCELLENT</b> | Fluorescence<br><b>NONE</b> | Report Ref:<br><b>6611749508559</b> |
|--|--|-------------------------|------------------------------|-----------------------|---------------------|--|-------------------------|----------------------------|------------------------------|-----------------------------|-------------------------------------|

**Comments:**  
This Laboratory Grown Diamond was created by Chemical Vapor Deposition (CVD) growth process.