



**ELECTRONIC COPY**

LG749508446  
Report verification at igi.org



November 14, 2025  
IGI Report Number **LG749508446**  
Description **LABORATORY GROWN DIAMOND**  
Shape and Cutting Style **CUSHION MODIFIED BRILLIANT**  
Measurements **10.97 X 8.27 X 5.38 MM**  
**GRADING RESULTS**  
Carat Weight **4.50 CARATS**  
Color Grade **FANCY INTENSE YELLOW**  
Clarity Grade **VS 2**

November 14, 2025  
IGI Report Number **LG749508446**  
Description **LABORATORY GROWN DIAMOND**  
Shape and Cutting Style **CUSHION MODIFIED BRILLIANT**  
Measurements **10.97 X 8.27 X 5.38 MM**

**GRADING RESULTS**

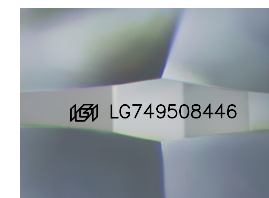
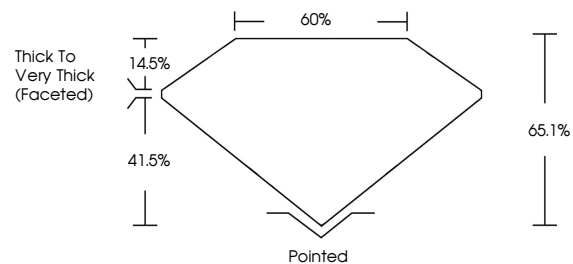
Carat Weight **4.50 CARATS**  
Color Grade **FANCY INTENSE YELLOW**  
Clarity Grade **VS 2**

**ADDITIONAL GRADING INFORMATION**

Polish **EXCELLENT**  
Symmetry **EXCELLENT**  
Fluorescence **NONE**  
Inscription(s) **IGI LG749508446**

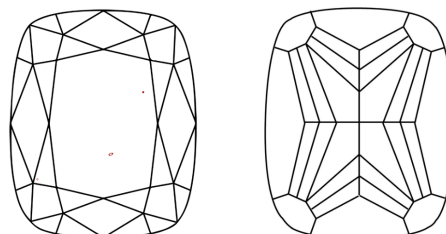
Comments: This Laboratory Grown Diamond was created by Chemical Vapor Deposition (CVD) growth process.

**PROPORTIONS**



Sample Image Used

**CLARITY CHARACTERISTICS**



**KEY TO SYMBOLS**

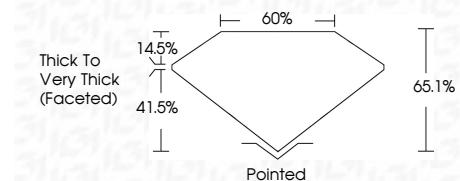
Red symbols indicate internal characteristics.  
Green symbols indicate external characteristics.

**COLOR**

D E F G H I J Faint Very Light Light

**CLARITY**

FL	IF	VS <sup>1-2</sup>	VS <sup>1-2</sup>	SI <sup>1-2</sup>	I <sup>1-3</sup>
Flawless	Internally Flawless	Very Very Slightly Included	Very Slightly Included	Slightly Included	Included



**ADDITIONAL GRADING INFORMATION**

Polish **EXCELLENT**  
Symmetry **EXCELLENT**  
Fluorescence **NONE**  
Inscription(s) **IGI LG749508446**  
Comments: This Laboratory Grown Diamond was created by Chemical Vapor Deposition (CVD) growth process.



**IGI**



November 14, 2025  
IGI Report No LG749508446  
CUSHION MODIFIED BRILLIANT

4.50 CARATS  
FANCY INTENSE YELLOW  
VS 2  
65.1%  
60%  
Thick to Very Thick (Faceted)  
Pointed  
EXCELLENT  
EXCELLENT  
NONE  
IGI LG749508446

Comments: This Laboratory Grown Diamond was created by Chemical Vapor Deposition (CVD) growth process.