



ELECTRONIC COPY

LABORATORY GROWN DIAMOND REPORT

November 14, 2025
IGI Report Number LG749505890
Description LABORATORY GROWN DIAMOND
Shape and Cutting Style CUT CORNERED RECTANGULAR MODIFIED BRILLIANT
Measurements 7.51 X 5.33 X 3.93 MM

GRADING RESULTS

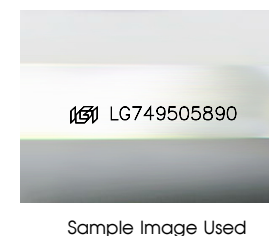
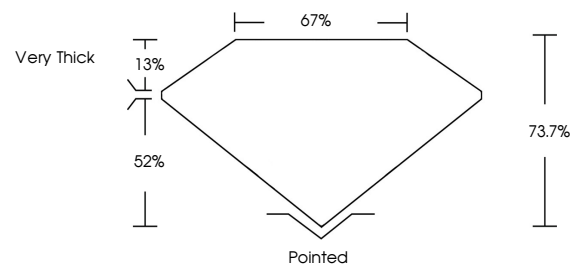
Carat Weight 1.53 CARAT
Color Grade FANCY VIVID ORANGY YELLOW
Clarity Grade VVS 2

ADDITIONAL GRADING INFORMATION

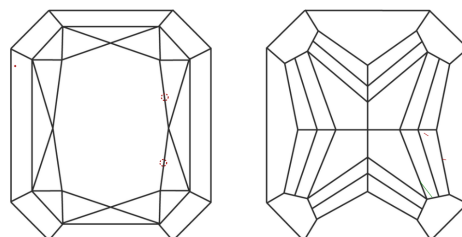
Polish VERY GOOD
Symmetry VERY GOOD
Fluorescence NONE
Inscription(s) (IGI) LG749505890

Comments: As Grown - No indication of post-growth treatment.
This Laboratory Grown Diamond was created by High Pressure High Temperature (HPHT) growth process.

PROPORTIONS



CLARITY CHARACTERISTICS



KEY TO SYMBOLS

Red symbols indicate internal characteristics.
Green symbols indicate external characteristics.

COLOR

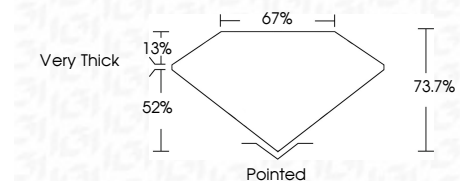
D E F G H I J Faint Very Light Light

CLARITY

FL IF VVS¹⁻² VS¹⁻² SI¹⁻² I¹⁻³
Flawless Internally Flawless Very Very Slightly Included Very Slightly Included Slightly Included Included



November 14, 2025
IGI Report Number LG749505890
Description LABORATORY GROWN DIAMOND
Shape and Cutting Style CUT CORNERED RECTANGULAR MODIFIED BRILLIANT
Measurements 7.51 X 5.33 X 3.93 MM
GRADING RESULTS
Carat Weight 1.53 CARAT
Color Grade FANCY VIVID ORANGY YELLOW
Clarity Grade VVS 2



ADDITIONAL GRADING INFORMATION

Polish VERY GOOD
Symmetry VERY GOOD
Fluorescence NONE
Inscription(s) (IGI) LG749505890
Comments: As Grown - No indication of post-growth treatment.
This Laboratory Grown Diamond was created by High Pressure High Temperature (HPHT) growth process.



November 14, 2025
IGI Report No LG749505890
CUT CORNERED RECT. MODIFIED BRILLIANT
1.53 CARAT
Carat Weight
Color Grade FANCY VIVID ORANGY YELLOW
Clarity Grade VVS 2
Depth 73.7%
Table 67%
Girdle Very Thick
Culet Pointed
Polish VERY GOOD
Symmetry VERY GOOD
Fluorescence NONE
Inscription(s) (IGI) LG749505890

Comments: As Grown - No indication of post-growth treatment.
This Laboratory Grown Diamond was created by High Pressure High Temperature (HPHT) growth process.