



**ELECTRONIC COPY**

## LABORATORY GROWN DIAMOND REPORT

November 12, 2025	
IGI Report Number	LG749502825
Description	LABORATORY GROWN DIAMOND
Shape and Cutting Style	ROUND BRILLIANT
Measurements	8.23 - 8.26 X 5.00 MM
GRADING RESULTS	
Carat Weight	2.08 CARATS
Color Grade	FANCY VIVID GREEN
Clarity Grade	VS 1
Cut Grade	IDEAL

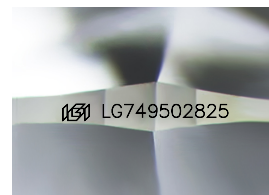
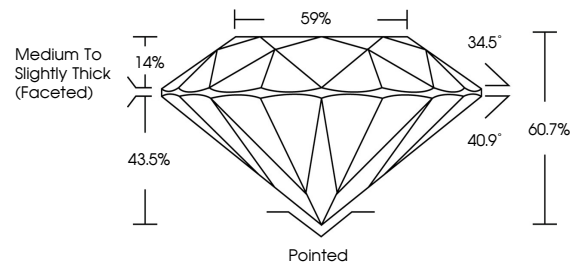
### ADDITIONAL GRADING INFORMATION

Polish	EXCELLENT
Symmetry	EXCELLENT
Fluorescence	NONE
Inscription(s)	 LG749502825

Comments: This Laboratory Grown Diamond was created by High Pressure High Temperature (HPHT) growth process.  
Indications of post-growth treatment.

LG749502825  
Report verification at [igi.org](https://igi.org)

## PROPORTIONS



Sample Image Used

## COLOR

D E F G H I J Faint Very Light Light

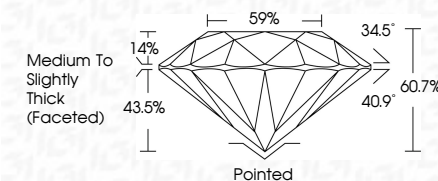
## CLARITY

FL	IF	VVS <sup>1-2</sup>	VS <sup>1-2</sup>	SI <sup>1-2</sup>	I <sup>1-3</sup>
Flawless	Internally Flawless	Very Very Slightly Included	Very Slightly Included	Slightly Included	Included

## LABORATORY GROWN DIAMOND REPORT



November 12, 2025	
IGI Report Number	LG749502825
Description	LABORATORY GROWN DIAMOND
Shape and Cutting Style	ROUND BRILLIANT
Measurements	8.23 - 8.26 X 5.00 MM
GRADING RESULTS	
Carat Weight	2.08 CARATS
Color Grade	FANCY VIVID GREEN
Clarity Grade	VS 1
Cut Grade	IDEAL



### ADDITIONAL GRADING INFORMATION

Polish	EXCELLENT
Symmetry	EXCELLENT
Fluorescence	NONE
Inscription(s)	(16) LG749502825

Comments: This Laboratory Grown Diamond was created by High Pressure High Temperature (HPHT) growth process.  
Indications of post-growth treatment.



© IGI 2020, International Gemological Institute

FD - 10 20

**www.igi.org**

THIS DOCUMENT WAS PRODUCED WITH THE FOLLOWING SECURITY MEASURES: SPECIAL DOCUMENT PAPER, INK SCREENS, WATERMARK, BACKGROUND DESIGNS, HOLOGRAM AND OTHER SECURITY FEATURES NOT LISTED AND DO EXCEED DOCUMENT SECURITY INDUSTRY GUIDELINE

November 12, 2025  
GI Report No LG749502825  
ROUND BRILLIANT

8.23 - 8.26 X 5.00 MM

Carat Weight 2.08 CARATS

Color Grade

Clarity Grade	VS 1	IDEAL
Cut Grade		

Cut Grade	IDEAL
Depth	60.7%

Table	59%
-------	-----

Girdle

	Pointed	Culet
11 mm x 4 mm		

Polish	EXCELLENT
Current	Polished

Symmetry	EXCELLENT
Birefringence	NONE

Fluorescence	NONE
Inscription(s)	1871 LG749502825

Comments:

**Comments:**  
This Laboratory Grown Diamond was created by High Pressure Hlab

created by High Pressure High Temperature (HPHT) growth process. Indications of post-growth treatment

### Calculations of post-growth treatment.