



ELECTRONIC COPY

LG749502296
Report verification at igi.org



November 11, 2025
IGI Report Number LG749502296
Description LABORATORY GROWN DIAMOND
Shape and Cutting Style ROUND BRILLIANT
Measurements 7.45 - 7.49 X 4.54 MM
GRADING RESULTS
Carat Weight 1.56 CARAT
Color Grade E
Clarity Grade VVS 1
Cut Grade IDEAL

LABORATORY GROWN DIAMOND REPORT

November 11, 2025
IGI Report Number LG749502296
Description LABORATORY GROWN DIAMOND
Shape and Cutting Style ROUND BRILLIANT
Measurements 7.45 - 7.49 X 4.54 MM

GRADING RESULTS

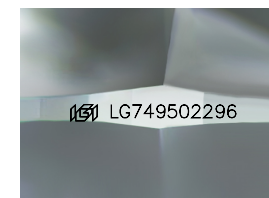
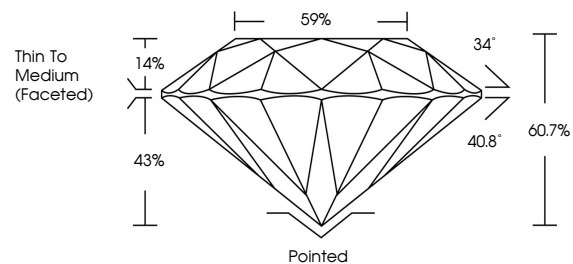
Carat Weight 1.56 CARAT
Color Grade E
Clarity Grade VVS 1
Cut Grade IDEAL

ADDITIONAL GRADING INFORMATION

Polish EXCELLENT
Symmetry EXCELLENT
Fluorescence NONE
Inscription(s) IGI LG749502296

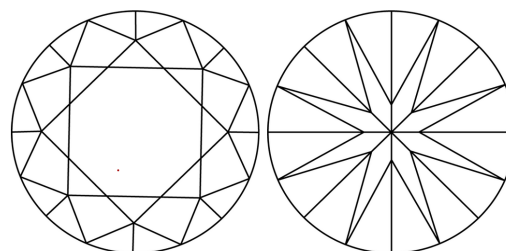
Comments: This Laboratory Grown Diamond was created by Chemical Vapor Deposition (CVD) growth process. Type IIa

PROPORTIONS



Sample Image Used

CLARITY CHARACTERISTICS



KEY TO SYMBOLS

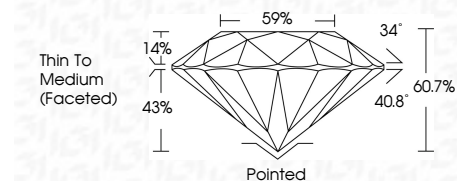
Red symbols indicate internal characteristics.
Green symbols indicate external characteristics.

COLOR

D E F G H I J Faint Very Light Light

CLARITY

FL IF VVS 1-2 VS 1-2 SI 1-2 I 1-3
Flawless Internally Flawless Very Very Slightly Included Very Slightly Included Slightly Included Included



ADDITIONAL GRADING INFORMATION

Polish EXCELLENT
Symmetry EXCELLENT
Fluorescence NONE
Inscription(s) IGI LG749502296
Comments: This Laboratory Grown Diamond was created by Chemical Vapor Deposition (CVD) growth process. Type IIa



Certified SUSTAINABILITY RATED DIAMOND. All certified diamonds come with an individual certificate, ONLY available at an accredited retailer. SCS GLOBAL SERVICES. QR code and scan instruction.

Summary of report details: November 11, 2025, IGI Report No LG749502296, ROUND BRILLIANT, 7.45 - 7.49 X 4.54 MM, 1.56 CARAT, E, VVS 1, IDEAL, 60.7%, 59%, Thin To Medium (Faceted), Pointed, EXCELLENT, EXCELLENT, NONE, IGI LG749502296. Comments: This Laboratory Grown Diamond was created by Chemical Vapor Deposition (CVD) growth process. Type IIa