



LABORATORY GROWN DIAMOND REPORT

November 14, 2025
 IGI Report Number **LG748504172**
 Description **LABORATORY GROWN DIAMOND**
 Shape and Cutting Style **ROUND BRILLIANT**
 Measurements **5.40 - 5.44 X 3.35 MM**

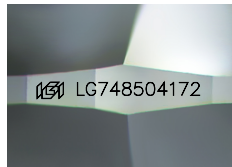
GRADING RESULTS

Carat Weight **0.60 CARAT**
 Color Grade **D**
 Clarity Grade **VVS 2**
 Cut Grade **IDEAL**

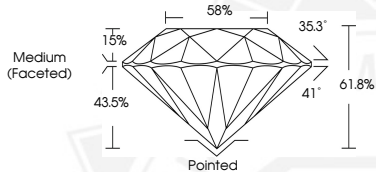
ADDITIONAL GRADING INFORMATION

Polish **EXCELLENT**
 Symmetry **EXCELLENT**
 Fluorescence **NONE**
 Inscription(s) **IGI LG748504172**

Comments: HEARTS & ARROWS
 This Laboratory Grown Diamond was created by Chemical Vapor Deposition (CVD) growth process. Type Ila



Sample Image Used



HEARTS & ARROWS



November 14, 2025
 IGI Report Number **LG748504172**
 ROUND BRILLIANT
 LABORATORY GROWN DIAMOND
 5.40 - 5.44 X 3.35 MM
 0.60 CARAT
 D
 VVS 2
 IDEAL
 EXCELLENT
 EXCELLENT
 NONE
 IGI LG748504172

Comments: HEARTS & ARROWS This Laboratory Grown Diamond was created by Chemical Vapor Deposition (CVD) growth process. Type Ila



November 14, 2025
 IGI Report Number **LG748504172**
 ROUND BRILLIANT
 LABORATORY GROWN DIAMOND
 5.40 - 5.44 X 3.35 MM
 0.60 CARAT
 D
 VVS 2
 IDEAL
 EXCELLENT
 EXCELLENT
 NONE
 IGI LG748504172

Comments: HEARTS & ARROWS This Laboratory Grown Diamond was created by Chemical Vapor Deposition (CVD) growth process. Type Ila



THIS DOCUMENT WAS PRODUCED WITH THE FOLLOWING SECURITY MEASURES: SPECIAL DOCUMENT PAPER, INK SCREENS, WATERMARK, BACKGROUND DESIGNS, HOLOGRAM AND OTHER SECURITY FEATURES NOT LISTED AND DO EXCEED DOCUMENT SECURITY INDUSTRY GUIDELINES.