



# INTERNATIONAL GEMOLOGICAL INSTITUTE

ELECTRONIC COPY

## LABORATORY GROWN DIAMOND REPORT

November 14, 2025  
IGI Report Number **LG748504168**  
Description **LABORATORY GROWN DIAMOND**  
Shape and Cutting Style **ROUND BRILLIANT**  
Measurements **5.35 - 5.37 X 3.26 MM**

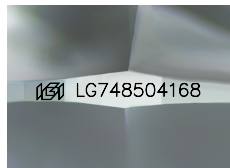
### GRADING RESULTS

Carat Weight **0.57 CARAT**  
Color Grade **D**  
Clarity Grade **VS 1**  
Cut Grade **IDEAL**

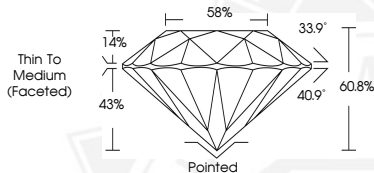
### ADDITIONAL GRADING INFORMATION

Polish **EXCELLENT**  
Symmetry **EXCELLENT**  
Fluorescence **NONE**  
Inscription(s) **IGI LG748504168**

Comments: HEARTS & ARROWS  
This Laboratory Grown Diamond was created by Chemical Vapor  
Deposition (CVD) growth process.  
Type Ila



Sample Image Used



HEARTS & ARROWS



November 14, 2025  
IGI Report Number **LG748504168**  
**ROUND BRILLIANT**  
**LABORATORY GROWN DIAMOND**  
**5.35 - 5.37 X 3.26 MM**  
Carat Weight **0.57 CARAT**  
Color Grade **D**  
Clarity Grade **VS 1**  
Cut Grade **IDEAL**  
Polish **EXCELLENT**  
Symmetry **EXCELLENT**  
Fluorescence **NONE**  
Inscription(s) **IGI LG748504168**  
Comments: HEARTS & ARROWS This  
Laboratory Grown Diamond was  
created by Chemical Vapor  
Deposition (CVD) growth process.  
Type Ila



November 14, 2025  
IGI Report Number **LG748504168**  
**ROUND BRILLIANT**  
**LABORATORY GROWN DIAMOND**  
**5.35 - 5.37 X 3.26 MM**  
Carat Weight **0.57 CARAT**  
Color Grade **D**  
Clarity Grade **VS 1**  
Cut Grade **IDEAL**  
Polish **EXCELLENT**  
Symmetry **EXCELLENT**  
Fluorescence **NONE**  
Inscription(s) **IGI LG748504168**  
Comments: HEARTS & ARROWS This  
Laboratory Grown Diamond was  
created by Chemical Vapor  
Deposition (CVD) growth process.  
Type Ila



THIS DOCUMENT WAS PRODUCED WITH THE FOLLOWING SECURITY MEASURES: SPECIAL DOCUMENT PAPER, INK SCREENS, WATERMARK, BACKGROUND DESIGNS, HOLOGRAM AND OTHER SECURITY FEATURES NOT LISTED AND DO EXCEED DOCUMENT SECURITY INDUSTRY GUIDELINES.

For terms & conditions and to verify this report, please visit [www.igi.org](http://www.igi.org)