



November 12, 2025

IGI Report Number **LG748504106**

**ROUND BRILLIANT**

**LABORATORY GROWN DIAMOND**

**6.20 - 6.30 X 3.90 MM**

Carat Weight	<b>0.95 CARAT</b>
Color Grade	<b>E</b>
Clarity Grade	<b>SI 2</b>
Cut Grade	<b>VERY GOOD</b>
Polish	<b>EXCELLENT</b>
Symmetry	<b>GOOD</b>
Fluorescence	<b>NONE</b>
Inscription(s)	<b>IGI LG748504106</b>

Comments: As Grown - No indication of post-growth treatment. This Laboratory Grown Diamond was created by High Pressure High Temperature (HPHT) growth process. Type II

**LABORATORY GROWN DIAMOND REPORT**

November 12, 2025

IGI Report Number **LG748504106**

Description **LABORATORY GROWN DIAMOND**

Shape and Cutting Style **ROUND BRILLIANT**

Measurements **6.20 - 6.30 X 3.90 MM**

**GRADING RESULTS**

Carat Weight **0.95 CARAT**

Color Grade **E**

Clarity Grade **SI 2**

Cut Grade **VERY GOOD**

**ADDITIONAL GRADING INFORMATION**

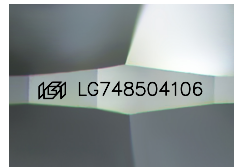
Polish **EXCELLENT**

Symmetry **GOOD**

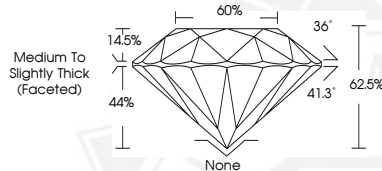
Fluorescence **NONE**

Inscription(s) **IGI LG748504106**

Comments: As Grown - No indication of post-growth treatment. This Laboratory Grown Diamond was created by High Pressure High Temperature (HPHT) growth process. Type II



Sample Image Used



November 12, 2025

IGI Report Number **LG748504106**

**ROUND BRILLIANT**

**LABORATORY GROWN DIAMOND**

**6.20 - 6.30 X 3.90 MM**

Carat Weight	<b>0.95 CARAT</b>
Color Grade	<b>E</b>
Clarity Grade	<b>SI 2</b>
Cut Grade	<b>VERY GOOD</b>
Polish	<b>EXCELLENT</b>
Symmetry	<b>GOOD</b>
Fluorescence	<b>NONE</b>
Inscription(s)	<b>IGI LG748504106</b>

Comments: As Grown - No indication of post-growth treatment. This Laboratory Grown Diamond was created by High Pressure High Temperature (HPHT) growth process. Type II



THIS DOCUMENT WAS PRODUCED WITH THE FOLLOWING SECURITY MEASURES: SPECIAL DOCUMENT PAPER, INK SCREENS, WATERMARK, BACKGROUND DESIGNS, HOLOGRAM AND OTHER SECURITY FEATURES NOT LISTED AND DO EXCEED DOCUMENT SECURITY INDUSTRY GUIDELINES.